

# Piteå

the destinations of  
**SWEDISH  
LAPLAND**  
SWEDEN'S ARCTIC DESTINATION

Summer 2023 

## ***Welcome to Piteå***

*- That's what we Pite residents  
like to say the most*

*The Piteå  
Visitor's Guide*  
**FIND OUR GEMS  
THIS SUMMER**

# *Come here and feel right at home*



**THIS VISITOR'S GUIDE** will tell you almost everything you need to know about summer in Piteå. This lovely small town that attracts visitors from all over the world to Swedish Lapland. In summer, Piteå is a bustling tourist city, creating a carnival atmosphere brimming with hospitality and charm, alongside a great tranquillity. Along the 300 kilometre coast, facing the world's largest brackish-water archipelago, a summer adventure awaits. Let yourself be enticed

by the long sandy beaches, the shimmering archipelago and the picturesque walking paths. Here, you can enjoy the stillness of the forest, adventures on the river, the mystical magic of the midnight sun as well as events and activities throughout the summer. You get to choose from a wide range of accommodation; camp out by the sea, stay at a luxurious hotel or book a cottage of your own in the archipelago.



Photo: Andreas Jacobsson

Summer 2023 in Piteå! We offer events for all tastes and ages. We long for sun and swimming, but also for all of you lovely visitors.

*You are warmly welcome to share our pleasant Piteå summer.*

## **Welcome to Piteå Tourist Center**

We are happy to help you plan your visit. We can tell you more about where to stay, what to eat and what to see and also what will be going on in Piteå during your stay.

You will find us at the old brewery opposite the bus station. We sell tickets for local events, books, art, crafts and souvenirs.

Telephone: 0911-933 90,

E-mail: [visit@pitea.se](mailto:visit@pitea.se)

Visit us at: Bryggargatan 14, Piteå

Discover more or chat with us:

[www.visitpitea.se/eng](http://www.visitpitea.se/eng)

#pitea @piteatourist



**Events in Piteå**  
[pitea.se/en/Visitors/  
events/](http://pitea.se/en/Visitors/events/)



Hike through dense forests, across vast fields, along old country roads and through the majestic river landscape. Experience local culture and take a break at one of the beautiful rest stops. The Solanderleden trail allows you to experience the multifaceted natural and cultural landscape up close.

Photo: Britta Elfving Persson



**Solanderleden**  
Read the whole  
story about the  
Solander trail





## Contents



30

*Piteå summer city*

*For your taste*



32

*Stay in the archipelago*



12

*Childishly fun*



22

*Inspiration and indulgence in Piteå*



16

*Energising activities*



10

*Pite Havsbad - a world of adventure*

## more:

- Sea and archipelago
- Activities
- Events and culture
- Shopping
- Culinary culture
- Accommodation

- 6
- 12
- 20
- 28
- 30
- 32

# A world of islands

TO DISCOVER



**TURN TO THE EAST** and look out over the sea. There they are, waiting for you – the approximately 550 islands of the Piteå archipelago, each with its own, exciting history.

The sea and the archipelago by the coastal city of Piteå have long been central in the development of the region and the city centre was moved to its current location in 1666 in order to be closer to the coast. Generations of Piteå residents have since lived off fishing and shipping. The archipelago of the Gulf of Bothnia spans from the Västerbotten County in the south to Finland in the northeast and contains a total of 10 nature reserves.

There are rest stops and cottages in which you can stay overnight on several of the islands. The varying characteristics of the islands offer an exciting range of plant life, exciting stories, cultural environments and

remains from the olden days. The Piteå archipelago is easily accessible by boat, kayak, tour boat or boat taxi. Transfer is included at a discount rate when you book one of the cottages at Vargön, Mellerstön, Baggen or Stor Råbben.

We recommend a visit to the glistening, still lagoon at Stenskär, a beautiful environment to explore on hot summer days with its long sandy beach, rich bird life, labyrinth remains and a picturesque fishing camp. The centrally located island, Fingermanholmen is popular with tourists and locals alike, with its web of walking trails, fine sandy beaches, bathing and barbecuing spots and sauna. Read more about the archipelago at

[www.pitea.se/en/visitors/archipelago](http://www.pitea.se/en/visitors/archipelago)

Read more about the cottages in the archipelago on page 32.





## Stor-Räbben

Farthest out with the most extensive historical lineage, a strategic place for hunting and fishing. There are several ancient remains preserved here and a nature and culture trail that will take you around the island.



## Baggen

Large island rich in contrasts, with steep cliffs and sandy bays. Especially well suited for bathing and an oasis with delightful natural contrasts and several walking trails.

# Four POPULAR ISLANDS TO VISIT



## Vargön

Large, green island with the nature reserves Koskäret and Koskärsälshalsen. Here you will find footbridges, a warm cabin, a sauna and campfire sites, hiking trails and a beautiful walking trail.



## Stenskär

The quiet, sparkling lagoon at Stenskär attracts many visitors with its long sandy beach. The island also has a rich bird life, archaeological remains of old labyrinths and a fishing village with repainted fishermen's cottages.

## Paddle your kayak and discover the shimmering archipelago of Piteå on your own

If you don't have your own kayak, you can rent one and get an unforgettable near-water experience of the beautiful archipelago of Piteå. Discover shallow bays, windswept islands or coves and skerries that slowly rise out of the sea. The kayak allows you to explore places that are not accessible by boat and there are several kayak trails you can follow.



## Tour Boat

TAKES YOU OUT INTO THE ARCHIPELAGO.

Book your own tour or join one of the regular tours to Stenskär or Stor-Räbben in the Piteå archipelago. M/B Transkär departs from Bondön marina and you book and read more on their website.

[www.nordisk-sjotaxi.se](http://www.nordisk-sjotaxi.se)



# Piteå by the sea

WHERE SEA MEETS LAND

THE COSY CITY CENTER OF PITEÅ has a radiant small town charm and you are always close to both the Pite River and the sea. The harbours are teeming with life, in the city center as well as in the archipelago and locals offer extraordinary hospitality and hostship. If you do not have a boat of your own, you can arrange for transportation or tag along on one of the tours.

Foto: Piteå Turistcenter



# Camping paradises

The most central option to park your caravan is at Västra Kajen Camping & Gästhamn. Down south by the sea is Pite Havsbad with it's fantastic selection of things to do. There are plenty of other camping options.

Discover  
the camping  
sites in  
Piteå

Västra Kajen Camping



Photo: Västra Kajen

Read more on page 36.

Photo: Stina Eriksson



## History from 1874

The Piteå Shipping Museum is found in port warehouses number 6 and 7 by Västra kajen (the Western Quay). The larger warehouse used to be the customs chamber, hinges and locks hint that it is likely older than the other buildings. Many of the warehouses were built in 1874-75, according to Lieutenant Berg's planning map of the city of Piteå. In 1998 the Piteå Shipping Museum was established to preserve and display this cultural treasure, consisting of historical wooden and seal hunting boats as well as fishing tools. Here, you can discover the coastal culture that has developed throughout the centuries in Swedish Lapland.

[www.piteabtmuseum.se](http://www.piteabtmuseum.se)



## Amongst labyrinths and ancient remains

Many ancient remains tell us that the locals have certainly travelled between the islands of the archipelago, looking for food and livelihood for more than a thousand years. The labyrinths are one of several ancient remains that can be seen here. Other examples are building foundations, berthing sites for boats, fishing camps and remains of cairns used for drying nets. 100 of the 300 known labyrinths in Sweden are found in the Bothnian archipelago. Take the opportunity to go on a memorable excursion or an historical voyage of discovery.

Photo: Sofia Weillborg

## Pite Rönnskär

A summer paradis that used to be a fishing camp, a coast pilot's station and a lighthouse. There are about 30 houses left, most of them owned by descendants. Today there is a small youth hostel in the old coast pilots house, and a café. There are tourboats from Kinnbäck if you want to visit and need transportation.

[www.kinnbacksskargard.se](http://www.kinnbacksskargard.se)



Photo: Stina Eriksson



Västra Kajen  
THIS SUMMER

### SKEPPSCAFÉ

Open summertime.  
Offers lunch, sandwich,  
coffee and swedish fika

Keep a lookout at the website:  
[www.vastrakajen.se](http://www.vastrakajen.se)



SUNNY, SANDY ADVENTURES AT

# Pite Havsbad

Foto: Thomas Åberg



**WELCOME INTO THE HOLIDAY AND FAMILY PARADISE!** Pite Havsbad is a family resort full of adventure and coziness for the whole family. Here it is 100% holiday regardless of the weather with activities, play, entertainment and restaurants for all tastes. The kilometer-long sandy beach at Pite Havsbad is an oasis of sun, swimming and beach activities, shallow and child-friendly. The facility is one of northern Europe's largest for tourists, families with children, conferences and groups of friends. If you prefer swimming indoors there is the tropically splashed Äventyrsbadet with water slides, hot tubs, sun terrace and sauna. Although

Pite Havsbad often measures up the country's highest bathing temperatures in the sea, there is one outdoor pool for those who prefer temperate swimming.

The ship is 3,000 square meters in size activity center with playground, adventure golf, bowling, pool and much more. At Pite Havsbad you can choose between staying in a cabin, hotel or at the five-star camping in a caravan, mobile home or tent. The area's many servings and different dishes making sure to satisfy hungry bellies. We warmly welcome you to one sizzling holiday paradise!



# Entertainment

## ALL SUMMER

It will be a summer full of fun and music at Pite Havsbad, which offers magical concert evenings under the midnight sun with some of Sweden's best artists, great atmosphere, singing and dancing.

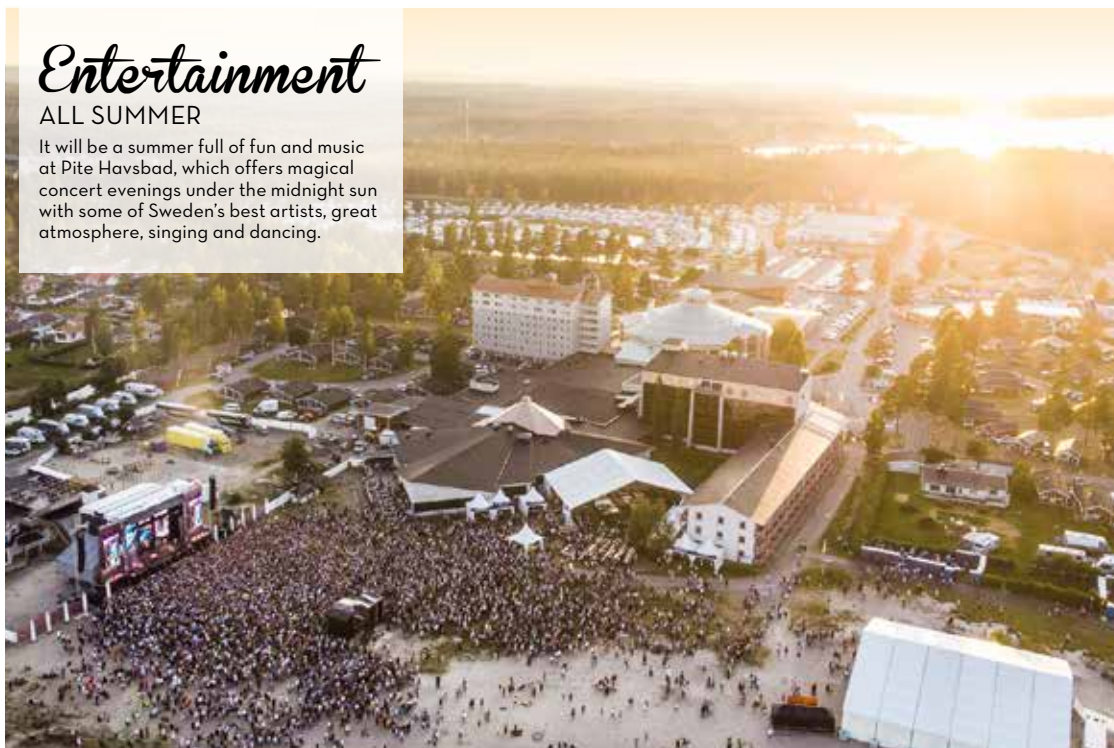


Photo: Anders Westergren



Photo: Tomas Bergman

### THE WATER PARK

The waterpark brings you happiness, challenges, playful fun and relaxation regardless of the weather. Challenge each other in the 81 metre water slide with a 10 metre drop and built-in timekeeping. Spin a record number of spins in the Space Bowl and take a ride through the waterfall. Relax in a sauna or a jacuzzi, sit down with an ice-cream or something from the grill at the water park café.

Children's best



### NIMBYS WORLD

There is much fun to do throughout the summer, especially for the kids! Here at Pite Havsbad we love children having fun. In our large playground Nimbys World, the children can run, play, having fun, jump as much as they want.

### AKTIVITETER

- Water Park
- Playground Nimbys World
- Padel
- Golf
- Miniature golf
- Adventure golf
- Instructor-led training sessions
- Drink tastings
- Bastu
- Adventure park
- Pedal car rental
- Beach sport
- Tennis (outdoor)
- Jumping cushions
- Outside gym
- Amusement park
- Show for children
- Disco for children
- Bowling
- Pool
- Outdoor pool
- Sandy beach
- Shuffleboard
- Running and biketrails
- And much more.

### OUTDOOR EXERCISE

Holidays don't just have to be good food, swimming and lazy days. At Pite Havsbad there is everything you need to be able to combine a family holiday with training. During the summer, instructor-led training sessions are organized and the outdoor gym is always open.



Photo: Getty Images

### FOOD FOR YOUR TASTE

More and more people choose to travel for good food experiences. At Pite Havsbad we offer many restaurants with lots of options!

More information:  
[www.pitehavsbad.se](http://www.pitehavsbad.se)

# children's THE BEST laughter



**Activities**  
Activities at  
Pite Havsbad

**PITEÅ WELCOMES ALL CHILDREN** with open arms and lots of activities. You can visit child-friendly bathing beaches, playgrounds, green areas, fun parks and challenge the family to go karting and paintballing. Enjoy a picnic in the cosy, child-friendly Badhusparken with a café and a playground. Stroll along Parkstraket down to the South Harbour and try the high slide whilst looking at boats passing by.

In early July, Piteå Summer games, one of Sweden's largest youth football tournaments happens here. A true family festival with participating teams from all over the world.

Pite Havsbad offers fun activities regardless of the weather, the playhouse known as The Ship and the tropical water park. In Piteå, you can cool down in pleasantly temperate pool in the city or visit one of the lesser known, but just as inviting, bathing beaches. Piteå is a true gem on the Swedish Lapland coast, with bathing options for all ages as well as foodexperiences by the sea, by the poolside, by lakes and bays.

More information about The Ship at Pite Havsbad:  
[www.pite-havsbad.se/en](http://www.pite-havsbad.se/en)





## Sikfors pool

Outdoor pool at the charming, child-friendly Sikfors campsite, close to nature. Heated pool, a grill and a kiosk. [www.sikforscamping.se](http://www.sikforscamping.se)

## Äventyrsbadet, Pite Havsbad

A complete water park with water slides, a pool, steam and dry saunas, an outdoor pool, a sunbathing terrace and sensation showers. There is also a café and a grill where you can enjoy a snack or a tasty burger.

[www.pite-havsbad.se/en](http://www.pite-havsbad.se/en)



Photo: Piteå kommuns bildarkiv

## Norrstrandspoolen

Centrally located, popular outdoor pool with water slides, a kiosk and amenities, as well as dressing rooms.

[www.visitpitea.se/eng](http://www.visitpitea.se/eng)

## Utomhuspool, Pite Havsbad

Heated pool with a water slide, centrally located at the campsite. Open all days for as long as the weather allows, during high summer.

[www.pite-havsbad.se/en](http://www.pite-havsbad.se/en)

# Four POOLS FOR FUN AND BATHING



Photo: Tomas Bergman



Photo: Pite Havsbad



Photo: Getty images

## THRILLING ADVENTURES AND PLAYFUL CHALLENGES

Welcome to excitement, adventure and different challenges. In the Paintballtorpet's adventure forest you can challenge friends and family in paintball.

Let the adrenaline flow and round up over the open.

@paintballtorpet

## PUSH THE GAS PEDAL IN A GO-KART!

Take wide turns and press the pedal to the metal as you challenge family, friends or colleagues to a real race. On the track at Piteå Motor Stadium you can complete as many laps as you can fit into 6 minutes. The track at Piteå Motor Stadium at Haraholmen is said to be the best kartway track in northern Sweden. Here, up to 10 karts can race on a 900 metre track with no speed limit. It's up to you to prove who's the fastest, the track has a built-in timekeeping system.

[www.gocartpitea.se](http://www.gocartpitea.se) [www.kartway.se](http://www.kartway.se)



Photo: Piteå Turistcenter

# Five bathing tips

FOR FAMILIES  
WITH CHILDREN



Photo: Tone Brunnes

### GLÄNTAN

The locals' own beach paradise, also one of Piteå's nature reserves. Here is a pleasantly shallow beach with fine sand, open spaces and beautiful sand dunes.

### HAMNVIKEN

Popular, cosy, natural and pleasantly shallow bathing beach. Beautifully situated in a small bay, at the end of a charming road, lined with neat houses.

### LÅNGNÄS

Cosy bathing beach by Svensbyfjärden, a smaller beach with dressing rooms and an outhouse. Found by the Solanderleden trail.



Photo: Ylva Olafsson

### NORRSTRAND

Centrally located, small, nice bathing beach with a pier. Miniature golf, boule and frisbee golf courses nearby.

### PITE HAVSBAD

Vast, kilometre-wide, fine-grained sandy beach, pleasantly shallow, child friendly sea bath. Close to fun beach activities, indoor and outdoor pools, cafés and restaurants. A bit further away you will find one of two nude beaches in the region.

More places can be found at [www.pitea.se/en/visitors](http://www.pitea.se/en/visitors)



Photo: Stina Eriksson

*The idyllic Kärleksstigen  
(The Love Trail) at Furunäset  
offers a beautiful view  
of the Pite River.*

## THE PITE RIVER FROM THE MOUNTAINS to the coast

**THE PITE RIVER HAS HISTORICALLY BEEN** very important to Pitea and in many ways it still is. From the brave log drivers in the olden days to today's modern saw mills and forestry industry. This steadily flowing river is the lifeblood of the region, together with the forest it provides much of what we need in life: recreation, transportation and livelihood.

There are large natural reserves here, as well as a pantry of all the natural ingredients, characteristic of the beautiful coastal areas of Swedish Lapland. Discover the forestland through a variety of activities, experience coastal areas such as Pitholmsheden, a natural environment with sand and low pine forest, where the beaches and the sea are always close by. Find your own place along the river, fish, bath or just relax and breathe in the calm.



## THE MIGHTY RIVER STORFORSSEN

The highest undeveloped waterfall in Northern Europe, in the shape of a river with a waterfall featuring an 80 metre drop over the course of five kilometres (this can be compared to Niagara Falls with a drop of 49 metres). Storforsen is an impressive sight and millions of people have come here throughout the years to witness this natural wonder. In 1878 the course of the river was changed to its current state, for the sake of log driving. The results can be seen at Döda fallet (lit. the Dead Fall) and the giant cauldrons that have been carved out in the rock by rotating boulders. The walking path upstream will take you to Brudforsen where trout and grayling are fished. The area is a protected nature reserve with a forestry museum, a café, cabins, a charcoal kiln and a tar pit, as well as several barbecuing and campfire sites. The many piers and the footbridges going out to the river also make the area accessible to disabled people.



## CYCLING ADVENTURES

It's easy to cycle here and Piteå offers several scenic cycling routes in beautiful urban and rural environments. Get on your bike, discover beautiful surroundings and harmonious places along the Pite River. The Tourist Center will provide you with tour suggestions and Tvåhjulsmästarna (lit. the Two-Wheel Masters) have well-prepared bicycles available for hire, in a variety of models and price ranges.

[www.slcykel.se](http://www.slcykel.se)



## FISHING LUCK IN THE RIVER AND THE LAKES

Piteå in Swedish Lapland offers good fishing conditions thanks to accessible and multifaceted fishing waters. Here you can try fly fishing in forest rivers, angling in the city center, or spinning in the beautiful archipelago. The Jävrebodarna fishing camp has a bite guarantee and what could possibly taste better than self-caught rainbow trout or arctic char grilled on an open fire? Take the opportunity to visit Jävrebodarnas bruksmuseum (Mill Museum) where you can learn more about local history and see historical items. Plenty of parking space, caravan parking and cabins. Piteå has a number of specialised hunting and fishing stores where you can get both equipment and advice.

[www.fiskecampen.se](http://www.fiskecampen.se), [www.fritidvildmark.se](http://www.fritidvildmark.se), [www.nymansfiske.se](http://www.nymansfiske.se)



EXPERIENCE LONG DAYS  
AND LIGHT NIGHTS WITH

# energising activities

SUN, WIND AND WATER are natural elements with a particular ability to energise you and raise your spirits. In Piteå, you can have a nice stroll through the forest, go to a charming small town café, cool down in inviting waters and try thrilling adventures that will give you lifelong memories. Piteå's green oases and waterfronts can be found in the archipelago, out at sea, in the harbours and in the city. The many islands and water environments give you a wealth of options to choose from, regardless of whether you prefer the islands, the coast, the forests or city life. The outdoors, open around the clock, invites you to explore, discover and enjoy the environment, by yourself or together with others, during long days and light summer nights.

*In Piteå it's easy to find paddling-friendly waters near the city center.*



Photo: Stina Eriksson



## DISCOVER ALL OF PITEÅ

There is much to discover in Piteå and in the countryside around the entire municipality. Walking or cycling are two pleasant ways to visit your particular favourite place.

Foto: Maud Nordwall



## THE TRAILS THAT WILL BRING YOU CLOSER TO NATURE

Piteå offers trails both for peaceful walks and more intense hikes. The many vantage points along the trails offer breathtaking views. We recommend beginning your hike at the Tourist Center where you will find maps, trail guides and good advice from our staff.

## HIKE IN PITEÅ

Hike in Piteå is a challenge that includes 6 tops and 4 trails between villages as hiking tips. Challenge yourself and take the chance to win nice prizes. Visit us at the Tourist center and we will tell you more!

[www.pitea.se/vandraipitea](http://www.pitea.se/vandraipitea)

## Peaks with a view in Piteå

There is much to discover, not always exposed paths but well on the map. You can get tips from us at the Tourist center or by some brochures, various digital networks makes it possible to find more hikers who tip. Find your favorite!



### SOLANDERLEDEN

Go exploring the Nordic natural and cultural landscape along this trail, winding its way through rural Piteå. The trail is named after the Piteå local, Daniel Solander, one of Carl Linnaeus' students. Today, the trail stretches about 50 kilometres between Svensbyn and Sikfors but it is growing with a planned length of about 150 kilometres by 2020. Discover Solanderleden on foot, cycling or on horseback.

[www.solanderleden.se](http://www.solanderleden.se)

### ELIASLEDEN

Named after the master thief Elias, Eliasleden is about 9.4 kilometres long, going from Svensbyn via Eliassgrottan (Elias' Cave), Lake Djuptjärn and back. The many vantage points along the trail offer a range of beautiful views.

### KARLBERG

Several hiking trails start at Karlberg, varying in length from a few kilometres to 17 kilometres. From the vantage points at the mountains Råberget and Falkberget you can look out over the entire Piteå area.

### ARKEOLOGSTIGEN

Takes you around historic remains and tells about a lost era.

[www.visitpitea.se/eng](http://www.visitpitea.se/eng)

Foto: Linda Buska







A promotional poster for the 'Race of Champions ON ICE'. The background is a photograph of a car, likely a Volvo, driving on a frozen lake. The car is on the left, moving towards the right, and is kicking up a spray of ice and snow. In the background, a line of evergreen trees is visible under a cloudy sky. The title 'Race of Champions' is written in a large, bold, blue serif font. Below it, 'ON ICE' is written in a smaller, blue, sans-serif font. At the bottom, a line of text in a small, black, sans-serif font provides details about the event.

# Race of Champions

ON ICE

The world's best drivers settle for nose titles directly on the ice at Pite Havsbad. Keep an eye out for next ROC and save the date!



# Grand festivities

AND FRIENDLY  
MEETINGSPTS 2023



## More

More events are  
available at the  
calendar for Piteå.

### 26-27/5 National dogshow

Sjölås

### 2/6 Premiere for thursdays in the park

Nostalgic cars exhibition, Badhusparken

### 3/6 Premiere of the Summer fleamarket

Nolia

### 9-15/6 Festspelen i Piteå

Musical feast at Studio Acusticum that  
starts 9-10/6 with Backyard the new  
musical festival!

### 9-10/6 Backyard

Musical feast at Studio Acusticum  
(Festspelen)

### 17/6 Europe

Pite Havsbad

### 23-24/6 Midsommarfest

Celebration of Swedish Midsummer at  
Pite Havsbad

### 30/6-2/7 Piteå Summer Games

### 30/6-2/7 Öjeby kyrkmarknad

Market around Öjeby church and church  
village.

### 8/7 Håkan Hellström

Pite Havsbad

### 9/7 Folk & Fä visfestival

Swensbylida

### 8-16/7 Midnight Sun Race Week

Dragracing på Pite Dragway

### 14-16/7 Nordic Dog Show

Sjölås

### 26/7 Gyllene Tider

Pite Havsbad

### 27-30/7 PDOL Piteå Dansar och Ler

Centrala Piteå

### 19/8 Gladiators for children

Piteå city

### 23-24/8 Öjeby Lantbruksmässa

Agronomical fair Öjebyns Agropark

### 14/9 Lisa Nilsson & Mattias Torell

Studio Acusticum

### 7/10 Shima is a Punk Rocker

Studio Acusticum

### 9/11 Face Vocal Band

Studio Acusticum



## Piteå Summer Games 30/6-2/7

Annually attracting approximately 800 teams from 16 nations, making it the second largest youth football tournament in Sweden. During this weekend, all of Piteå is teeming with the particular kind of festive atmosphere that comes along with enthusiastic young footballers, parents, coaches and audiences from every corner of the world, coming together to challenge and support one another during hot summer days and light, cool, summer nights.

[www.piteasummargames.se/en](http://www.piteasummargames.se/en)



Photo: Sofia Wellborg

## The Öjeby Church Market 30/6-2/7

In the weekend after Midsummer, the Öjeby Church Market is held, with commerce and communion in historical environments. Here you will find food, traditional handicraft, clothes, art handicraft and lots more. Visitors from all over Scandinavia come to meet the market vendors and enjoy nice, family-friendly entertainment. The church town is one of the largest in the country with living traditions, known as a medieval trading place and the site where the city of Piteå was founded. There are cottages in which you can stay overnight, dating back to the 17th century and once used by parishioners coming from far away to go to church. Piteå was first founded around the church town, before the land uplift meant that the city had to be moved to Håggholmen where it has remained to this day. Take a look inside the beautiful stone church and the parish cottage museum. [www.visitpitea.se/eng](http://www.visitpitea.se/eng)



Photo: Britta Elfving Persson

## Midnight Race Week

Pite Dragway has been home to racing competitions for many years and is one of Sweden's best, with a crowd-friendly arena. Experience the world of fast engines and the powerful soundscapes from engines settling who is fastest.



Photo: Pite Dragway

## Gyllene tider - Pite Havsbad 26/7

Gyllene Tider, one of the largest Swedish music groups enters the stage directly on the beach of Pite Havsbad. Party atmosphere at it's best!

[www.pitehavsbad.se](http://www.pitehavsbad.se)



## PDOL - Piteå Dansar och Ler 27-30/7

Piteå Dansar och Ler (lit. Dances and Smiles) opens up the streets and squares of the city to a free festival with something for everyone. Music, dancing and sports mingle with a mobile amusement park, a market and a love land. Piteå Dansar och Ler is one of the oldest festivals in Sweden (it premiered in 1961 under the name Nattivalen) and it attracts visitors from near and far.

[www.pdol.se](http://www.pdol.se)



Photo: Piteå Dansar och Ler



Photo: Måns Berg/Kust Hotell & Spa

Piteå's new landmark  
KUST Hotell & Spa.

# INSPIRATION AND indulgence

**PITEÅ IS GROWING TALLER.** The construction boom in recent years has created a new city silhouette.

A 14-story hotel is amongst the most spectacular additions. Restaurants and creative meeting places are opening on a regular basis.

However, the most exciting things happen between the buildings, amongst the people. New initiatives and innovations allowing Piteå to prosper. The Piteå School of Music and the Studio Acusticum concert hall with world-class acoustics are here, offering a wide selection of cultural events, worthy of a much larger city.

Piteå's creators and entrepreneurs work closely

with local enterprise, the local council and researchers, with the Piteå Science Park being one of the hubs.

With the forests providing renewable raw materials, new, innovative, world-class products and processes are being developed. Construction of the largest land-based wind power park has commenced and Lusthusbacken is a residential area for the future, with organic, energy-efficient housing.

Welcome here, let yourself be inspired by the unique fusion of the spirit of Piteå, with students, enterprise, research and entrepreneurship.



## WITH NATURE AGAINST THE SKIN

Our spa ritual is inspired by the nature in Norrbotten. You can do it on your own or together with someone you like. In a calm and quiet pace you go through the eleven steps using hot and cold water sources, saunas, showers and the pool, together with selected organic products. The ritual with the incredible view gives new power and strengthens your senses.

[www.hotellkust.se](http://www.hotellkust.se)

Photo: Måns Berg/Kust Hotell & Spa

Photo: Pite Havsbad



## THE BIGGEST SPA IN NORRBOTTEN

Are you longing for a relaxing moment with a seaview? We have a 830 kvm large oasis of health and wellbeing with the sea as its closest neighbour. This is a spa decorated with care, a large lounge, treatment rooms and four different saunas where you can sit and enjoy the stunning views. On the roof we have a large terrace, enjoy the warmth of the sun and the sea breeze while eating or drinking something tasty from the bar.

[www.pitehavsbad.se](http://www.pitehavsbad.se)

Photo: Fredrik Broman

## Unique organ with 9,000 pipes

Studio Acusticum is home to one of the largest organs in Scandinavia. The instrument, ten metres wide and almost as tall, has an impressive 9,000 pipes and 208 voices. At its opening in 2012, a piece was played on it, written specially for the occasion by Benny Andersson, one of the famous ABBA-members.

[www.studioacusticum.com/acusticum-orgeln](http://www.studioacusticum.com/acusticum-orgeln)

## Guided tour - Acusticum

Listen to the story about the multifunctional consertshall, and the story behind the Organ Acusticum, an organ for the 21st century. Keep a lookout in the Events calendar.

[www.pitea.se/evenemang](http://www.pitea.se/evenemang)



*When visits to the house of God were mandated by law, the church towns were lively meeting places. Social life and trade were important.*

## COME AND SEE **the olden days**

PITEÅ'S CULTURAL HISTORY has been shaped by the very first town, formed around the church village in Langnäs, before it was moved to Öjebyn to be closer to the sea and then finally to Hägg-holmen, where the city still stands today.

The people of Piteå consider themselves travellers and are found all over the world, however, the proud slogan of the city is "you come here when you come home". Piteå's locals enjoy vacationing close to home, they love welcoming visitors and they are always ready to show you the very best of Piteå's small town charm.

There is a lot to see and explore in Piteå, not least all the contrasts between the traditional and the innovative. Make a visit to one of the local artisans, many have their own boutiques next door to their studios.

Piteå is also known for its particular dialect – Pitemålet – with its own dictionary and children's books. The distinct vocabulary is a part of the genuine cultural heritage.

*Gammelgården*  
YOU WILL FIND THE HISTORICAL  
EXHIBITION IN GAMMELGÅRDEN



## A TRADITIONAL MARKET & A WELL PRESERVED CHURCH IN ÖJEBYN

The oldest parts of the medieval ashlar church were built as early as the 15th century. The lower part of the current clock tower was built then and is probably the oldest building in the region. The cottages used by parishioners coming from afar are well preserved and form the church town. In summer, the annual, popular, traditional church market takes place. During that time, you can visit the church town museum, as well as a display cottage, complete with historical furnishings. The church, its church town and the museum are popular places to visit and guided tours are available.

[www.kyrkmarknaden.se](http://www.kyrkmarknaden.se)  
[www.svenskakyrkan.se](http://www.svenskakyrkan.se)

Photo: Visit Piteå



Photo: Peter Skaugvold



Photo: Magnus Johansson

## A HISTORICAL PLACE TO VISIT

The Swensbylida hembygdsområde (local heritage area) is a popular place to visit with a dam, a mill building, a Norse mill and lovely green areas. Swensbylida is built around the historical site of the Pehrsgården farmstead dating back to the 17th century. Visit the cosy café selling homemade pastries, meet the animals and become part of Piteå's living cultural heritage. Cultural Tuesdays are organised here and of course, the local delicacy Pitepalt is available.

[www.swensbylida.se/en](http://www.swensbylida.se/en)

## Pitemål A SMALL parlour

Välkommen hit dell Pit	=	Welcome here to Piteå
Nalta	=	Small
Åsit	=	Nothing
Hojna	=	She
Hajna	=	He
Gåude göudat	=	Pretty crazy
Naggerst	=	Somewhere



## Inviting, delighting Jävre

In the idyllic community of Jävre you can visit Kvärnmuseet (the Mill Museum), beautifully situated by the water running through the village. The Skag Lighthouse in Jävre is one of the oldest in Sweden and was at work outside Örnsköldsvik 1871-1957. In the 1970's it was finally moved to Jävre. Lighthouses of the same type were produced in Jävre for a long time. Beas Rökeri och Hamncafé (Smokery and Harbour Café) is a true gem, serving freshly smoked fish by the harbour. The spectacular tourist station has been listed as a protected building. Enjoy the ocean view and the exhibition about automotive traffic, learn about other aspects of life in Sweden during the 1960's

[www.visitpitea.se/eng](http://www.visitpitea.se/eng)

PLACES  
WORTH A

# visit

## 1 THE ALTERHEDEN RHUBARBERIE AND BOUTIQUE

Sweden's only rhubarberie with its own boutique can be found in the beautiful Alterdalen. Here you can shop for tasty treats such as rhubarb toffee, rhubarb liquorice, cloudberry mulled wine and various marmalades. During the summer, a rhubarb safari, a guided tour of the farm, is also available. The café is open every day of the week during summer.

[www.alterhedens.se](http://www.alterhedens.se)



## 2 THE HETA HYTTAN GLASSWORKS

The Heta Hyttan Glassworks is found in the old brewery, part of Furunäset's old hospital and asylum, built in 1890. You can shop from a wide assortment or sit down to study the glassblowers, working every day of the week except Mondays. You can also book a private session and try glassblowing.

[www.hetahyttan.se](http://www.hetahyttan.se)



## 3 JÖSSGÅRDEN

In the small village of Sjulsmark just outside of Piteå you can visit Jössgårdén with the beautiful old farm. They invite you to real home made Swedish fika, lunch, horse activities, bread baking in the old baking Cottage and much more.

[www.jossgarden.se](http://www.jossgarden.se)

## 4 THE PITEÅ MUSEUM

Take an exciting tour of the museum, detailing the cultural history of the Piteå region. The Piteå Museum is found at the Rådhusstorget square and they also operate Fiskarstugan at Kurirkajen in the North Harbour, open on special occasions.

[www.piteamuseum.nu](http://www.piteamuseum.nu)

## 5 THE SKAG LIGHTHOUSE

One of the oldest lighthouses in Sweden, used outside Örnsköldsvik 1871-1957 before it was moved to Jävre in the 1970's. The Skag Lighthouse was donated by Swedish Maritime Administration to commemorate regional lighthouse building traditions.

[www.visitpitea.se/eng](http://www.visitpitea.se/eng)

# Welcome to Piteå





# ome tea!





## SHOPPING WITH small town charm

PITEÅ'S STORES AND STORE OWNERS bid you a warm welcome with a long history of personal service and a strong sense for seasonal offers. Shopping in Piteå you will experience the particular small town charm that has been passed on through generations of merchants. Here, the malls with their given place and well known brands, have blended with smaller, more personal boutiques selling vintage and secondhand items.

The history of the friendly pedestrian street begins in 1961 when it became the first pedestrian-only street in Sweden. Today, you can see the names of notable Piteå residents engraved in the street as you walk by. Just outside the city centre, the shopping district, Backcity has sprung up in recent years. You can take a free bus here and shop for everything from furniture to toys, electronics and sporting equipment. A genuinely pleasant summer atmosphere is always present in the lush, centrally located Badhusparken.

### *Recommended:* FLEA MARKETS & ANTIQUES

#### **Emmastugan, Böle**

Flea market and antiques every day during the summer.

#### **Kupan, Piteå**

A wide selection of antiques sold for a good cause.

[www.redcross.se](http://www.redcross.se)

#### **PMU Second Chance, Öjebyn**

The largest secondhand shop in Swedish Lapland with a wide assortment. [www.pmu.se](http://www.pmu.se)

#### **Repris, Öjebyn**

Recycling market run by the Piteå Council. [www.pitea.se/repris](http://www.pitea.se/repris)



## CREATIVE COASTAL CITY ARTISTRY

For those of you looking to find personal treats and keepsakes, Piteå offers both farm boutiques and country stores. Here, you can talk to the artists themselves and learn the full story behind the creations before you buy them. Heta Hyttan is known for its range of imaginative, handmade glass products, created in the room next door to the shop. If you feel so inclined, you can also try blowing your own glass.

Read more at: [www.hetahyttan.se](http://www.hetahyttan.se), [www.visitpitea.se](http://www.visitpitea.se)

## FRIENDLY SHOPPING ENVIRONMENTS

Småstaden and Gallerian in Piteå are friendly malls, offering indoor shopping daily. Here you will find well known brands and you can meet people, hang out and have a lunch or a snack in a pleasantly busy environment. The well-assorted stores give you the most and the best, for comfortable, accessible shopping even when you don't have a lot of time.

[www.gallerianpitea.se](http://www.gallerianpitea.se)

[www.smaastaden.com](http://www.smaastaden.com)



Photo: Getty

## Country delights

In Altersbruk north of Piteå you will find Alterhedens Farm shop with a large selection of delicacies, many home-cooked in own production. A specialty is rhubarb in a jar and good marmalades, and much more. In summer, coffee, sweets and ice cream are offered along with events like Rhubarb safari or try the Piteå national dish Pitepalt.

[www.alterhedens.se](http://www.alterhedens.se)



# 3

PEARLS IN THE  
COUNTRYSIDE

## Eufåria

In Svensbyn, just outside of Piteå you can visit Eufåria, a farm with lamb production. The farm shop offers their own lambskin and handicrafts. [www.eufaria.se](http://www.eufaria.se)



Photo: Jennie Lind

## Västi Gård

Västi Gård is located in the village of Bertnäs north of Piteå and here the lambs are born under the northern lights and they grow up in the midnight sun. Good quality and durability is important. In the farm shop we offer our own products but also accommodation and other activities.

[www.vastigard.se](http://www.vastigard.se)

# EXPERIENCE THE arctic flavors

THE TASTE OF PITEA, Swedish Lapland proudly presents the local culinary heritage, revealing the secret behind the perfect recipe for Piteå's signature dish, palt. The truth is that there is not just one recipe, every new palt has its own character, imbued by whoever rolled and boiled it. The basic ingredients remain the same, potatoes, flour, salt and a salted pork filling, best enjoyed with lingonberry jam, butter and ice cold milk.

White

GUIDE

## Restaurants

### SERVING PALT:

Paltzerian, MD:s restaurang,  
KolerElvis, Restaurang  
Munksundsgården, Swensbylida,  
Sikfors Konferens och Fritidsby,  
Alterhedens rabarberi.

In Piteå, many of the ingredients come directly from the forests, the lakes and the land. Here, you can let yourself be surprised by local chefs or go out in the countryside with a fishing rod, a mushroom basket, or to pick berries. Piteå offers fine dining as well as a varied selection of places to lunch. Dine at Doktorsvillan or Restaurang Tage, both listed in the White Guide, or try the historical restaurant at Pite Stadshotell, established in 1906, where a combination of a pleasant environment and high-quality food creates a wonderful experience. Taste fish from clear, local waters and wild game from all over Swedish Lapland, where the untouched, pristine natural environment will spark your appetite. Come taste our coastal culinary creations.



Photo: Maria Fäldt



# HAVE A SWEDISH FIKA AT JÄVRE

Take a day trip to the idyllic village of Jävre and visit Beas Rökeri & Hamncafé (Smokery and Harbour Café) located by the harbour. Here you can enjoy a Swedish fika, coffee and pastries, or try freshly smoked fish. Don't miss the Jävre Mill and its summer café and local history museum. Here you can buy homemade pastries, ice cream and nice gifts.  
[www.beasrokerihamncafe.se](http://www.beasrokerihamncafe.se) [www.javrekvarn.se](http://www.javrekvarn.se)



## RIVER VALLEY FLAVOURS AND VAST VIEWS AT RESTAURANT TAGE

Restaurant Tage on the 14:th floor, 53 metres up, with a vast view of the coast and the surroundings. Here you will be treated to flavours ranging from the mountains in the north, down to the sea and the archipelago in the south, everything inspired by nature, culture and flavours from the Pite River Valley. The sky bar at the restaurant will offer a fantastic cocktail menu and two rooftop terraces for when you wish to be even closer to the views and feel the wind in your hair. Tage is a contemporary brasserie serving regional dishes, with room for 150 guests. Life in the Pite River Valley provides the foundation for everything, coloured with international culinary influences. We welcome both locals and visitors to share our food experiences and exciting stories.

[www.restauranttage.se](http://www.restauranttage.se)



Photo: Restaurang Tage

## Taps & by This is How

It all started in an old bus garage in Piteå where three beer geeks thought that life's good moments become even better with really good beer. They started brewing and pretty soon the garage turned into a real brewery. What started as a fun hobby is today a full-time job for five people. Taps& is our restaurant concept where we serve our good beer together with suitable cuisine.

[www.thisishow.se](http://www.thisishow.se)  
[www.tapsand.se](http://www.tapsand.se)



Photo: This is How





Four islands in the Piteå archipelago offering cosy accommodation and self-catering. Lie down on cliffs bathing in sunlight, swim from piers, have a sauna bath, fish and enjoy open fires, boating life and the amazing tranquillity. [www.visitpitea.se/en/visitors](http://www.visitpitea.se/en/visitors)

Photo: Linda Buska

### Stor-Räbben

At this historical fishing camp in the outer rim of the Piteå archipelago you will find a newly built self-catering cottage. Take a walk and experience the fascinating stories, the unique natural environment and the captivating story behind the old daymark.



### Mellerstön

Self-catering cottage by the sea. Access to your own pier, boat and wood-burning sauna. Boats will often dock in the beautiful bay nearby.



Photo: Linda Buska

**Four**  
ISLANDS WITH  
CABINS TO RENT

Photo: Linda Buska

### Vargön

Two self-catering cottages near the sea. Access to your own boat and wood-burning sauna. The area has an open resting cabin with a permanent exhibition and footbridges will take you around the island.



### Baggen

Four self-catering cottages by the sea, with access to a wood-burning sauna. Walk along the cliffs and become part of the long history of this island.



Photo: Piteå Turistcenter





*At the heart of Piteå since 1906, a 4-star city hotel with its turn-of-the-century charm well preserved. Staying at Piteå Stadshotell, you will find yourself in the city centre with restaurants, nightlife and shopping just around the corner.*

## COSY CHARM from cottages to suites

**YOU RARELY SLEEP AS WELL** as when your head is full of new impressions. Come and experience the hearty hospitality of the people of Piteå, regardless of whether you choose a campsite, a cottage or a luxurious hotel. In the city centre is KUST Hotel & Spa, the new landmark of the region and winning designer hotel of Luxury New Hotel and Luxury Boutique Hotel, northern Europe, World Luxury Hotel Awards. Piteå Stadshotell, dating back to 1906, offers classic charm with crystal chandeliers, spacious environments and a captivating history. Beautifully embedded in an historical environment is Furunäsets Hotell & Konferens and near to Piteå's 27-hole golf course you will find an inviting golf hotel. Read more about all your accommodation options in the directory. Regardless of the option you choose, it will make a great starting point for your visit to the coast, the river, the city and the villages.

See page 36 for more information about accommodation options and booking.

## CHARMING AND CLOSE TO THE CITY

Piteå also welcomes those who prefer charmingly small-scale accommodation. Pensionatet (The boarding house) is centrally located in Piteå's oldest quarters. Surrounded by buildings listed as protected for their cultural heritage value, you will find this cosy place with its own café and lovely turn-of-the-century charm. Piteå Vandrarhem (Hostel) offers snug accommodation by the popular Badhusparken and the peaceful Strömsund Canal. At Västra Kajen you can stay in an historic environment, in newly built rooms with maritime-style interiors.



Photo: Sofia Wellborg



Photo: Kust Hotel & Spa

## A 4-star designer hotel in the city centre

A 4-star designer hotel in the city center Kust Hotell & Spa is the new landmark of the region, towering 53 metres over central Piteå. Its 14 stories, or chapters if you will, take you on a storytelling journey along the Pite River. The journey goes from the source of the river, by the Sulitelma mountain range and Sweden's largest glacier, to the brackish water archipelago on the coast of the Bay of Bothnia. KUST hotel & Spa tells a story for all of our senses. The pride of local ingredients becomes aromas, tastes and memories, in the restaurant and skybar at the top of the hotel. We would like you to want to stay here, regardless of whether you hang out in the lobby bar for a night, go to a conference, pamper yourself in the hotel spa or enjoy a long, relaxing weekend with someone special.

*Piteå is situated by the largest brackish water archipelago in the world. Out on the islands, you can get an idea of what life was like when fishing was the main livelihood in the region. Pictured is the island Stenskär.*







# Accommodation

## Hotell

### FURUNÄSET HOTELL & KONFERENS

Belonasvägen 2 B, Piteå  
+46(0)911-779 50  
www.furunasethotell.se

*Hotel and conference facilities, exciting architecture in a historic building.*



Photo: Piteå Golfklubb

### PITEÅ GOLFHOTELL

Nötövägen 119, Piteå,  
+46(0)911-149 90  
www.piteagolf.se

*Hotel, cottages and camping near one of the best golf courses in Swedish Lapland, only 100 metres away from the first tee.*



Photo: Piteå Havsbad

### PITE HAVSBAD

Hotellvägen 50, Piteå  
+46(0)911-327 00  
www.pitehavsbad.se/en

*One of the largest facilities in northern Europe for accommodation, conferences and experiences.*



Photo: Skoogs City/BnB

### SKOOGS CITY/BnB

Uddmansgatan 5, Piteå  
+46(0)911-10 000  
www.skoogsbnb.se

*Bed and breakfast in the same building as Piteå's cozy shopping center, Småstaden.*



Photo: Bishops Arms

### HOTEL BISHOPS ARMS

Storgatan 44 B, Piteå  
+46(0)911-25 72 50  
www.bishopsarms.com/  
vara-hotell/pitea/

*Hotel with British-style interiors, one floor above the gastropub The Bishops Arms.*

### HOTELL SPORT & REST

Yrkesvägen 36, Piteå  
+46(0)911-313 10  
www.hotellsportandrest.se

*Hotel rooms with good options for self-catering.*



Photo: KUST Hotell & Spa

### KUST HOTELL & SPA

Hamngatan 60, Piteå  
+46(0)911-30 000  
www.hotellkust.se

*New hotel in the city center with a fantastic view over the town.*

### PITEÅ STADSHOTELL

Olof Palmesgata 1, Piteå  
+46(0)911-23 40 00  
www.piteastadshotell.com/en

*Business and conference hotel with exciting architecture and a wide range of options for accommodation, food and entertainment.*



Photo: Piteå Stadshotell

## Hostels/rooms

### CAMPUS HOLMEN

Ångsholmen 1, Öjebyn  
+46(0)911-666 62  
www.campusholmen.se

*Hostel, rooms and apartments in a range of sizes.*

### PITEÅ VANDRARHEM

Storgatan 3, Piteå  
+46(0)70-322 03-10  
www.pitefolketshus.se

*Hostel in the middle of Badhusparken, next to the channel connecting the north and south harbours.*



Photo: Piteå vandrarhem

## Camping & cottages

### BJÖRKBACKENS REKREATIONSBYGGNAD

Hällanvägen 68,  
+46(0)70-212 10 07  
www.pitea.se/bo

*Cosy, modern cottage with fireplace and wood-burning sauna.*

### BORGARUDDENS HAVSBAD & FAMILJECAMPING

Borgaruddsvägen 880,  
Norrjärden  
+46(0)70-268 75 27  
www.borgaruddenscamping.se

*Campsite with cottages close to the seaside.*



Photo: Borgaruddens Havsbad & Familjecamping

### CAMP LADRIKE

Hyndgrundsvägen 2, Norrjärden  
+46(0)70-322 03 10  
www.ladrike.se

*Campsite with cottages right next to the E4 between Piteå and Luleå.*



# Accommodation

## Pensionat

Photo: Piteå kommun's bildarkiv



### FÅRÖN STUGBY

Färövägen 170, Piteå  
+46(0)70-523 09 11  
www.faroncamping.se

Campingsite, cottages and rooms at the island of Fårön..

### HEMLUNDA CAMPING

Hemlundavägen, Piteå  
+46(0)72-744 10 11  
www.hemlundacamping.se  
Campingsite next to a nice small swimming lake.

### JÄREBODARNAS FISKECAMP

Järebodarna 351, Jävreby  
+46(0)911-360 30  
www.fiskecampen.se

Campingsite and cottage combined with fishing close to the sea.

### JÖSSGÅRDEN

Norrsvägen 49, Sjulsmark  
+46(0)70-385 87 14  
www.jossgarden.se

Small scale farm offering accommodation in cottage.

### NORTHERN LODGES

Top of Vallsberget, Svensbyn  
www.northernlodges.se

Stay at the top of the mountain.

### NORRSKENSÅRDEN

Stor Långträsk 47, Långträsk  
+46(0)911-22 02 00  
www.norrskensgarden.se

Rooms, cottages and camping by lake Storlångträsket.

### NORRSTRANDS POOL OCH CAMPING

Norrstrandsvägen 5, Piteå  
+46(0)911-69 77 50  
www.visitpitea.se

Small campsite with a large pool located close to the beach and city.

### SIKFORS KONFERENS & FRITIDSBY

Kockvägen 9, Sifkors  
+46(0)911-700 77  
www.sikforscamping.se

Hotel rooms, cottages and camping, beautifully situated next to the Pite River.

### STORSTRAND

Mandolingatan 1, Öjebyn  
+46(0)911-601 47  
www.storstrand.nu

Camping, cottages and rooms in different sizes by the Pite River.

Photo: Storstrand

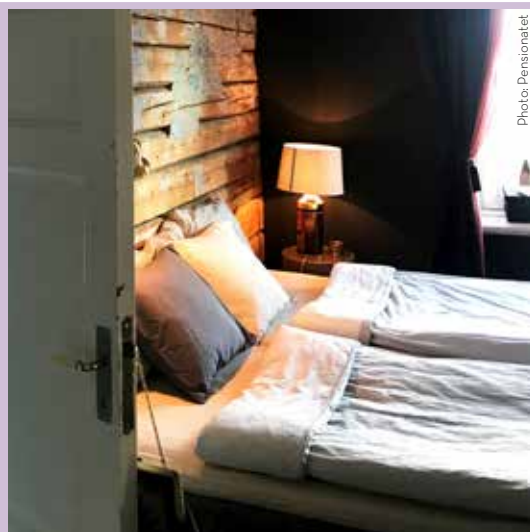


Photo: Pensionatet

### PENSIONATET

Malmgatan 11, Piteå  
+46(0)76-224 95 80  
www.pensionatet.com

Charming boarding house with unique rooms in Piteå's old quarters.

### TAIGANS SMÅBRUK

Strömnäs 67, Piteå  
+46(0)70-242 09 85  
www.taiganssmabruk.se

Small scale farm offering accommodation in cottages.

### VÄSTRA KAJEN CAMPING & GÄSTHAMN

Sjöbodegränd 19, Piteå  
+46(0)911-120 30  
www.vastrakajen.se

Camping ground with a maritime feel in the southern harbour, central Piteå.

## Cottages in the archipelago

The cottages out on the islands are all close to the shore and equipped for self-catering.

### RENTAL COTTAGE BAGGEN

Piteå Turistcenter  
+46(0)911-933 90  
www.pitea.se/bo

Four cottages, wood-burning sauna available.

### RENTAL COTTAGE VARGÖN

Nordisk Sjötaxi  
+46 (0)70-265 58 89  
www.nordisk-sjotaxi.se  
info@nordisk-sjotaxi.se

Two cottages, wood-burning sauna available.

### RENTAL COTTAGE MELLERSTÖN

Nordisk Sjötaxi  
+46 (0)70-265 58 89  
www.nordisk-sjotaxi.se  
info@nordisk-sjotaxi.se

One cottage, wood-burning sauna available.

### RENTAL COTTAGE STOR-RÄBBEN

Nordisk Sjötaxi  
+46 (0)70-265 58 89  
www.nordisk-sjotaxi.se  
info@nordisk-sjotaxi.se

Cottage, built in 2013.

Photo: Britta Ellving Persson



# Restaurants & cafés

## Restaurants

### 2KÖK ACUSTICUM

+46(0)911-122 45  
Acusticum 4, Piteå  
www.2kok.se

### BASTARD BURGERS

+46(0)911-202010  
Uddmansgatan 8, Piteå  
www.bastardburgers.se

### BAO STREET KITCHEN

+46(0)911-665 65  
Storgatan 72, Piteå  
www.baostreetkitchen.se

### CAFÉ PITEÅ

+46(0)911-21 15 95  
Småstaden

### KAJMAN

Kyrkbrogatan 9, Piteå

### CENTRUM KROG OCH GLASSKIOSKEN

+46(0)911-82 000  
Storgatan 35, Piteå  
www.centrumkrog.se

### CUT & SLICE

+46(0)911-700 70  
Kyrkbrogatan 9, Piteå  
www.cutandslice.se

### KOLERELVIS KÖK OCH CATERING

+46(0)911-150 95  
Nyckelvägen 2, Öjebyn  
www.kolerelvis.se

### KIFAS PIZZERIA & GRILLBAR

+46(0)911-668 08  
Gränvägen 2, Öjebyn

### KÖKET PÅ PENSIONATET

+46(0)911-130 20  
Malmgatan 11, Piteå  
www.koket.pensionatet.com

### LEMON TREE BAR & RESTAURANG

+46(0)911-27 72 77  
Sundsgatan 36, Piteå  
www.lemon-tree.nu

### MD:S RESTAURANG

+46(0)911-383 30  
Järvvägen 202, Jävre  
facebook/mdsrestaurang

### ODOD

+46(0)911-53 53 51  
Uddmansgatan 11, Piteå  
www.sushiododpitea.se

### PANELEN STEAKHOUSE & BAR

+46(0)911-383 33  
Storgatan 54, Piteå  
www.panelen.nu/pitea

### O'LEARYS

+46(0)911-88 01 00  
Hamngatan 56  
olearys.se/pitea

### PALTZERIAN

+46(0)911-607 80  
Gammelstadsvägen 1, Öjebyn  
facebook/paltzerian

### PITE HAVSBAD

+46(0)911-327 00  
Pite Havsbad  
www.pitehavsbad.se

### PITEÅ GARDEN

+46(0)911-88 10 01  
Sundsgatan 41 C  
www.piteagarden.se

### BRASA BBQ

+46(0)911-149 90  
Golfbanan Nötön,  
Nötövägen 119, Piteå  
www.piteagolf.se



Photo: Sifors Foto: Piteå Golfklubb Restaurang

### PINCHOS

+46(0)911-21 26 16  
Storgatan 39B, Piteå  
www.pinchos.se

### PITSTOP

+46(0)911-661 05  
Rågrindsvägen 1, Öjebyn  
www.pitstop-pb.se

### RESTAURANG FIORE

+46(0)911-23 40 00  
Olof Palmesgata, Piteå  
www.piteastadshotell.com

### RESTAURANG BLÅ ÄNGELN

+46(0)911-105 40  
Källbogatan 2, Piteå

### BORGÅRDENS MATSALAR

+46(0)911-23 96 91  
Hampas gränd 1, Piteå  
www.2kok.se

### RESTAURANG GOLDEN DRAGON

+46(0)911-159 22  
Storgatan 72, Piteå  
www.golden-dragon.se

### RESTAURANG HAWAII

+46(0)911-371 32  
Munksundsvägen 29, Piteå  
www.hawaiiipitea.se

### RESTAURANG MR. WOK

Sundsgatan 29, Piteå  
+46(0)911-21 10 11  
www.168.se

### RESTAURANG VILLAN

+46(0)73-901 09 11  
Furunäsvägen 106

### RESTAURANG MUNKSUNDSGÅRDEN

+46(0)911-374 05  
Munksundsvägen 46, Piteå



### RÅVARA

+46(0)911-88 10 88  
Fabrikgatan 7, Piteå  
www.sushibar.nu

### RESTAURANG TAGE

+46(0)911-131 11  
Hamngatan 60, Piteå  
www.restaurangtage.se



Photo: Restaurang Tage

### RESTAURANG TOPPEN

+46(0)911-172 92  
Håkingevägen 4, Norrfjärden

### RONJAS RESTAURANG & PIZZERIA

+46(0)911-135 67  
Storgatan 74, Piteå

### SIKFORS KONFERENS OCH FRITIDSBY

+46(0)911-700 77  
Kockvägen 9, Piteå  
www.sikforskonferens.se

### SUBWAY

+46(0)70-181 55 66  
Gallerian, Piteå

### SUSHI & TE

+46(0)76-837 87 44  
Prästgårdsgatan 29, Piteå  
www.sushi-te.se

### TAPS& BY THIS IS HOW

Källbogatan 70, Piteå  
+46(0)911-25 98 90  
www.tapsand.se

### THAI GARDEN RESTAURANG

+46(0)911-137 99  
Sundsgatan 31, Piteå  
www.thai-garden.se

### THE BISHOPS ARMS

+46(0)911-25 72 50  
Storgatan 44B, Piteå  
www.bishopsarms.se/pitea

### VISCHANGRILLEN

+46(0)76-112 63 14  
Lillpitevägen 580, Lillpite  
www.vischangrillen.se

*Included in the White Guide, which is the only restaurant guide in Sweden that evaluates the Swedish restaurants with journalistic integrity*

White

GUIDE

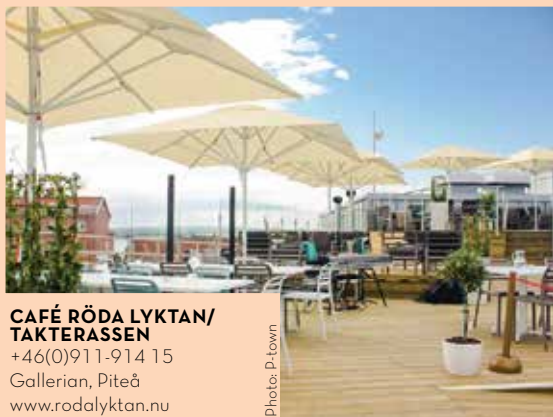


# Restaurants & cafés

## Restaurants



**ÅNGBRYGGERIET**  
+46(0)911-104 44  
Bryggargatan 14, Piteå  
[www.angbryggeriet.com](http://www.angbryggeriet.com)



**CAFÉ RÖDA LYKTAN/  
TAKTERASSEN**  
+46(0)911-914 15  
Gallerian, Piteå  
[www.rodalyktan.nu](http://www.rodalyktan.nu)

Photo: P-town

**CAFÉ TRANUTRÄSK**  
+46(0)70-699 76 35  
Tranuträsk 70, Norrfjärden  
[www.svedjekojan.se](http://www.svedjekojan.se)



**KVARNCAFÉET**  
+46(0)70-605 12 59  
Järvvägen 946, Jävreby  
[www.javrekvarn.se](http://www.javrekvarn.se)

**ESPRESSOHOUSE**  
+46(0)76-521 93 91  
Storgatan 53, Piteå  
[www.espressohouse.com](http://www.espressohouse.com)



**JÖSSGÅRDEN  
SOMMARCAFÉ**  
+46(0)70-385 87 14  
Norrsvägen 49, Sjulsmark  
[www.jossgarden.se](http://www.jossgarden.se)

**FIKET PÅ PENSIONATET**  
Malmgatan 11, Piteå  
[www.pensionatet.com](http://www.pensionatet.com)



Photo: Pensionatet



Photo: Stina Eriksson

**CAFÉ HILDUR**  
+46(0)70-309 49 97  
Degerbergsvägen 887  
[www.cafehildur.se](http://www.cafehildur.se)

**CAFÉ PITEÅ**  
+46(0)911-21 15 95  
Småstaden, Piteå  
[www.smastaden.com](http://www.smastaden.com)

**CAFÉ RÖDA LYKTAN**  
+46(0)911-914 55  
Småstaden, Piteå  
[www.rodalyktan.nu](http://www.rodalyktan.nu)

**S:T MARY  
KYRKSTADSCAFÉET**  
Söckengränd 4, Öjebyn  
+46(0)911-27 40 00

**NYA HANSÉN  
KONDITORI  
OCH BAGARBODEN**  
+46(0)911-23 03 97  
Storgatan 37 Piteå  
Öjagatan 39, Öjebyn  
[www.hansenskonditori.se](http://www.hansenskonditori.se)

**SKEPPSCAFÉET**  
+46(0)911-120 30  
Sjöbodegränd 19, Piteå  
[www.vastrakajen.se/skeppscafe](http://www.vastrakajen.se/skeppscafe)



Photo: Sanna Brämström

**SOMMARCAFÉ  
ANNICAS  
HANDELSTRÄDGÅRD**  
+46(0)911-660 50  
Taktvägen 5, Öjebyn  
[www.annicashandelstradgard.se](http://www.annicashandelstradgard.se)



Photo: Maria Fält

**SWENSBYLIJDA  
SOMMARCAFÉ**  
+46(0)911-24 14 18  
Östra Lidenvägen 55,  
Svensbyn  
[www.swensbylijda.se](http://www.swensbylijda.se)

# Activities

## Activities

### BIO 3:AN

Småstaden, Piteå  
+46(0)911-135 71  
www.bio3an.se

Cinema and "theater for hire".

### BORGARUDDENS HAYSBAD & FAMILJECAMPING

Borgaruddsvägen 880,  
Norrjärden  
+46(0)70-268 75 27  
www.borgaruddenscamping.se

Sandy beach, miniature golf,  
petanque, bouncy castle,  
playground.

### BOWLINGARENAN

Kyrkbrogatan 19, Piteå  
+46(0)911-172 99  
www.bowlingarenan.se

Bowling, sauna and relaxation  
area.

### GOCART PITEÅ

Campingvägen,  
Piteå Havsbad  
+46(0)70-980 03 60  
www.gocartpitea.se

Gocart, paintball and  
pentathlon.

### GUIDE NATURA

+46(0)70-672 21 09  
www.guide-natura.com  
Kayak and canoe hire.

### JÄVREBODARNAS FISKECAMP

Södra Jävrebodarna 351,  
Jävreby  
+46(0)911-360 30,  
+46(0)70-360 48 68  
www.fiskecampen.se

"Put and take!"  
Museum with tusends of  
items.

### JÖSSGÅRDEN

Norrsidvägen 49,  
Sjulsmark  
+46(0)70-385 87 14  
www.jossgarden.se

Farm with activities such as:  
Tour riding, children's riding,  
art classes, bake in old  
bakery, massage, wood-  
burning sauna, jacuzzi, etc.

### KAYAKOMAT PITEÅ

Norra hamn  
+46(0)70-335 18 68  
www.kayakomat.com

Kayak rental

### KARTWAY

Motorstadion, Haraholmen  
+46(0)70-337 68 00  
+46(0)70-699 29 00  
www.kartway.se  
Gokart.

### NORRSTRAND

Norrstrandsvägen 5, Piteå  
+46(0)911-69 77 50  
Outdoor pool.

### LINDBÄCKSSTADION

Arvidsjaurvägen 545, Piteå  
www.lindbacksstadion.se  
Outdoor arena with hiking  
trails, skitunnel and much  
more.



### HETA HYTTAN GLASBRUK

Hampas Gränd 14, Piteå  
+46(0)911-199 90  
www.hetahyttan.se

Watch the glass being created  
or make it yourself.



### MAD MIKES ADVENTURES

+46(0)70-225 28 77  
www.madmikeadventures.se

Western riding where you will  
safely experience the synergy  
between rider and horse.

### PILE HAYSBAD, SKEPPE

Hotellvägen 50,  
+46(0)911-327 00

3,000 m2 activity center for  
young and adults: adventure  
golf, bowling and games.



### PILE HAYSBAD ÄVENTYRSBAD

Hotellvägen 50  
+46(0)911-327 00  
www.pitehavsbad.se

Water park with fun for the  
entire family. Read more about  
all Pite Havsbad's activities on  
page 10-11.



Photo: Tomas Bergman



Photo: Martin Lundholm

### PAINTBALLTORPET

Näsudden, Öjebyn  
+46(0)70-347 66 33  
www.paintballtorpet.se

Adventurous activities for  
young and old. Adventure  
course and paintball.

### PADEL

PDL center, Pite Havsbad,  
Piteå Padel.



### PILEÅ BOULEBANA

Noliastigen, Piteå  
www.4idrottonline.se/  
PiteåBouleklubb-Boule

### PILEÅ SUP

+46(0)73-055 53 73  
Marinan Norra hamn

### PILEÅ MUSEUM

Storgatan 40, Piteå  
+46(0)911-126 15  
www.piteamuseum.nu

Piteå Museum offers historic  
tours and twilight walk, listening  
to "Nattrackarens" tales of  
robbers, ghosts and witches.



Photo: Maria Färdt



# Activities & sights

## Activities

### PITEÅ TENNISKLUBB

Batterigatan 3, Piteå  
+46(0)911-166 00  
At the arenas: Hellströms arena and Piteå Golfklubb.  
[www.piteatennisklubb.se](http://www.piteatennisklubb.se)

### SIKFORS KONFERENS & FRITIDSBY

Kockvägen 9, Sikfors  
+46(0)911-700 77  
[www.sikforscamping.se](http://www.sikforscamping.se)  
Outdoor pool, miniature golf, tennis court, fishing and guided tours to Sikfors old power plant.

### SVEDJEKOJAN HUSKY FARM

Tranuträsk 70, Norrfjärden  
+46(0)70-699 76 35  
[www.svedjekojan.se](http://www.svedjekojan.se)  
Visit the husky farm and meet the friendly dogs.



Photo: Destination Piteå

### SWENSBYLIJDA

Östra Lidenvägen 55, Svensbyn  
+46(0)911-24 14 18  
[www.swensbylijda.se](http://www.swensbylijda.se)  
Enjoy the rural area, visit the animals, have a Swedish fika and feel the life of the Swedish rural life of the 1800 century.

### TVÅHJULSMÄSTARNA SVANBORG & LUNDBERG

Västergatan 9, Piteå  
+46(0)911-21 14 75  
[www.slcykel.se](http://www.slcykel.se)

Bike hire all year round.

### WABI-SABI

+46(0)73-846 67 85  
[www.wabi-sabi.nu](http://www.wabi-sabi.nu)  
Guided tours and activities. Stories about gnomes and goblins, fairy tale and legend - or nature and history.

## Sights

### ALTERHEDENS RABARBERI

Norra Altervägen 1075, Piteå  
+46(0)911-20 43 93  
[www.alterhedens.se](http://www.alterhedens.se)  
Sweden's only rhubarberie and self-service store is open every day.

### BÖLE GARVERI

Nya Älvvägen 647, Bölebyn  
+46(0)911-620 23  
[www.boletannery.com](http://www.boletannery.com)  
Leather tannery, purveyor to the Royal Court of Sweden. Unique turn-of-the-century crafting environment with a lovely scent of leather. The world's only spruce bark tannery. Open on request.

### JÄVREBODARNAS FISKECAMP OCH BRUKSMUSEUM

Södra Jävrebodarna 351, Jävrebyn, +46(0)911-360 30,  
+46(0)70-360 48 68  
[www.fiskecampen.se](http://www.fiskecampen.se)  
Museum with 60 000 items of various types. Many have been used for hunting and fishing, also the world's largest collection of tools among other items of interest.



### JÄVRE KVARN

Järevägen 59, Jävre  
+46(0)70-605 12 59  
[www.javrekvarn.se](http://www.javrekvarn.se)  
Summer café in the historic mill environment and local history museum in the center of Jävre, located right by the river. Homemade pastries, ice cream among other refreshments.



### JÄVRE TURISTSTATION

Järevägen 186, Jävre  
+46(0)911- 933 98

### LEGDGÅRDEN

Lillpitevågen, Lillpite  
[www.facebook.com/legdgarden](http://www.facebook.com/legdgarden)  
Rural visitors area at Lillpite, an old mill, a water power plant and a summer café.

### PITEÅ BÅTMUSEUM

Sjöbodegränd, Södra hamn  
+46(0)70-533 31 63  
[www.piteabatmuseum.se](http://www.piteabatmuseum.se)  
The atmosphere of centuries of shipping and fishing in the Piteå region greets you on your visit to the shipping museum..

### PITEÅ KYRKA

Nygatan 23 Piteå  
+46(0)911-27 40 00  
[www.svenskakyrkan.se/pitea](http://www.svenskakyrkan.se/pitea)  
In the center of Piteå you will find one of the region's cultural treasures, the Piteå church. One of the oldest wooden churches in northern Swedish Lapland. Well worth a visit.



Photo: Sofia Wellborg

### ÖJEBY KYRKA, KYRKSTAD OCH KYRKSTADSMUSEUM

Affärsgratan 17, Öjebyn, +46(0)911-27 40 00  
[www.svenskakyrkan.se/pitea](http://www.svenskakyrkan.se/pitea)

The oldest part of the medieval rock-hewn church were built as early as the 15th century. The lower part of the current clock tower was built then and is probably the oldest preserved building in northern Swedish Lapland. The cottages that were used by churchgoers who had travelled from the far ends of the parish are now part of the well-preserved church town.



Photo: Sofia Wellborg

### PITEÅ MUSEUM

Storgatan 40, Piteå  
+46(0)911-126 15  
[www.piteamuseum.nu](http://www.piteamuseum.nu)  
An exiting museum of cultural history. The Piteå Museum also operates Fiskarstugan (the Fisherman's Cottage) at the Kurirkajen docks in the north harbour, open on special occasions.

### SIKFORS KRAFTMUSEUM

Kockvägen 9, Sikfors  
+46(0)911-700 77  
[www.sikforskonferens.se](http://www.sikforskonferens.se)  
Sikfors old power plant was commissioned in 1912 and became Norrbotten's first major power plant.

### STUDIO ACUSTICUM

Snickarvägen 22  
+46(0)911-69 68 28  
[www.studioacusticum.com](http://www.studioacusticum.com)  
Studio Acusticum is one of Northern Europe's most modern concert halls. Organ Acusticum is an instrument for the 21st century.

# Shopping

## Shopping, local produce & trade areas



### ALTERHEDENS GÅRDSBUTIK

Norra Ältervägen 1075,  
Norrfjärden  
+46(0)911-20 40 93  
[www.alterhedens.se](http://www.alterhedens.se)

*The only rhubarberie in Sweden. Inviting farm shop and selfservice shop with locally produced products based on rhubarb.*

### BACK CITY

Fläktgatan 10, Piteå  
[www.backcity.se](http://www.backcity.se)

*Shopping district close to the city centre, where you will find something for all ages from a wide range of options. The public transport City Line will take you here for free.*

### BÖLE POTATIS OCH KÖTT

Bölevägen 4, Böle  
+46(0)702418372  
[www.bolepotatis.se](http://www.bolepotatis.se)

*Farmshop with potatoes and meat.*



### BUTIKEN PÅ PENSIONATET

Malmgatan 11, Piteå  
+46(0)76-224 95 80  
[www.pensionatet.com](http://www.pensionatet.com)

*Boutique featuring locally produced design, small tasty treats and organic spa products.*

### EUFÅRIA

Hamptjärnsvägen 105,  
Svensbyn  
+46(0)70-204 12 26  
[www.eufaria.se](http://www.eufaria.se)

*Country-style farm store with handicraft and lambskin products straight from the farm.*



### GALLERIAN

Storgatan 41, Piteå  
[www.gallerianpitea.se](http://www.gallerianpitea.se)

*Centrally located mall with cafés and stores offering everything from clothing to beauty products.*



Photo: Britta Ellving Persson

### HEM LJUVA HEM

Storgatan 48, Piteå  
+46(0)911-130 10  
[www.hemljuvahem.org](http://www.hemljuvahem.org)

*This is the personal shop for presents, Swedish or nordic design a bit retro and a bit locally produced.*

### HETA HYTTAN GLASBRUK

Hampas gränd 14, Piteå  
+46(0)911-199 90  
[www.hetahyttan.se](http://www.hetahyttan.se)

*Boutique and glassworks, glassware and designer glass art with great artistic liberty.*



### JÄRNSPISENS MATBOD

Uddmansgatan 5  
+46(0)911-199 20  
[www.jarnspisenpitea.se](http://www.jarnspisenpitea.se)

*Delicacies and tasty gifts from Sweden and Europ.*



### KUPAN

Källbogatan 69, Piteå  
+46(0)911-21 17 86  
[www.redcross.se](http://www.redcross.se)

*Second hand store.*

### LINAS FINHETER

Gamla Sjulnäsavägen 22,  
Sjulnäs  
+46(0)70-974 57 81  
[facebook.com/linasfinheter](https://facebook.com/linasfinheter)

*Handicraft and flea market*



### PMU SECOND CHANCE

Granavägen 1, Öjebyn  
+46(0)911-27 15 60  
[www.pmu.se/pitea](http://www.pmu.se/pitea)

*A large second-hand shop with a wide range of articles.*

### REPRIS

Öjagatan 95, Öjebyn  
+46(0)911-69 61 77  
[www.pitea.se/repris](http://www.pitea.se/repris)

*Recycling Marketplace.*



### SMÅSTADEN

Storgatan 48, Piteå  
[www.smastaden.com](http://www.smastaden.com)

*Inviting mall in a charming environment.*

### SIGNEGÅRDEN

Blåsmarksvägen 111  
+46(0)70-644 40 03  
[facebook.com/signegarden](https://facebook.com/signegarden)

*Clothing with an ecological theme*

### ROST OCH BETONG

Södra Jävrebodarna 120  
+46(0)70-364 36 77  
[facebook.com/rostobeton](https://facebook.com/rostobeton)

*Art and crafts.*

### MONIKA ERIKSSON BRODERI OCH ULLDESIGN

Södra Jävrebodarna 89  
+46(0)70-274 09 10

*Designed wool products with different shapes and patterns.*



# Travel

## GETTING HERE IS EASY

It's an hour's flight from Stockholm Arlanda to Luleå or Skellefteå Airport. From Luleå Airport it's 50 km to Piteå city center and from Skellefteå airport it's 95 km. Or why not take the train or the bus? If you'd like to explore further afield, there are cars for hire at the airport and in the centre of Piteå.

### AVSTÅND

Piteå-Haparanda 174 km  
Piteå-Riksgränsen 522 km  
Piteå-Nordkap 947 km  
Piteå-Stockholm 876 km  
Piteå-Malmö 1 402 km  
Piteå-Skellefteå 80 km  
Piteå-Umeå 210 km  
Piteå-Luleå 50 km

## Rent a car

**AVIS BILUTHYRNING**  
[www.avis.se](http://www.avis.se)

**EUROPCAR PITEÅ**  
+46(0)911-22 40 59  
[www.europcar.se](http://www.europcar.se)

**HERTZ BILUTHYRNING**  
[www.hertz.se](http://www.hertz.se)

**XENTUS**  
+46(0)911-21 11 99  
[www.xentus.nu](http://www.xentus.nu)

## Train

**ÄLVSBYN STATION** 50 km  
**LULEÅ STATION** 50 km  
**SJ**  
+46(0)771-75 75 75  
[www.sj.se](http://www.sj.se)

## By air

### LULEÅ AIRPORT

50 km  
[www.swedavia.se/lulea](http://www.swedavia.se/lulea)

### SKELLEFTEÅ AIRPORT

95 km  
[www.skellefteaairport.se](http://www.skellefteaairport.se)

### ARVIDSJÄUR AIRPORT

130 km  
[www.arvidsjaurairport.se](http://www.arvidsjaurairport.se)

### PITEÅ AIRPORT

15 km  
Private planes.  
[www.pfk.pitea-flygklubb.se](http://www.pfk.pitea-flygklubb.se)

## Taxi, Airport transfer

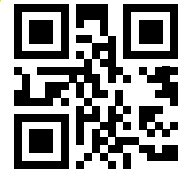
### SVERIGETAXI PITEÅ

+46(0)911-80 000  
[www.pitetaxi.se](http://www.pitetaxi.se)

## Bus

### PITEÅ STADSBUSS

+46(0)911-42 69 70  
[www.piteastadsbuss.se](http://www.piteastadsbuss.se)



**LÄNSTRAFIKEN**  
+46(0)771-10 01 10  
[www.ltnbd.se](http://www.ltnbd.se)

# TIMETABLE BOATS

FOR THE WEEKS 27-31

## TUESDAYS STOR RÄBBEN

from Bondömarina at 10 am  
back from Stor Räbben at 3 pm

## THURSDAYS STENSKÄR

from Bondö marina at 10 am  
back from Stenskar at 3 pm

## PRICE LIST ROUNDTRIP

200 sek/person, children up to 12 years 100 sek

Extra tours can be available. Bondö Marina is located at Bondökanalen at the end of the road to Haraholmen.

*Summer  
IN THE  
ARCHIPELAGO  
2023*



## COTTAGES FOR RENT IN THE ARCHIPELAGO

at four islands, all with cosy accommodation and self-catering.

At Vargön, Stor-Räbben and Mellerstön the cost is 650 sek/night and cottage and you make the reservation at [www.nordisk-sjotaxi.se](http://www.nordisk-sjotaxi.se)

The cottages at Baggen also for self-catering cost 500 sek/night and cottage. You make the reservation at Piteå Touristcenter.

## TRANSFER

If needed a Boat transfers to the cabins can be booked at a reduced price when booking the cabins.

**Baggen**, 900 SEK

**Vargön** (Koskäret), 700 SEK

**Mellerstön**

(Stenbergsviken), 700 SEK

**Stor Räbben**, 900 SEK



## BOAT TAXI

It is possible to book a boat taxi at an hourly price.

All transportation is booked by Nordisk Sjötaxi.  
[www.nordisk-sjotaxi.se](http://www.nordisk-sjotaxi.se)



## Welcome to Sweden's arctic destination!

In Swedish Lapland you will find unique arctic experiences. Thanks to the warm Gulf Stream, here high up by the Arctic Circle, you can experience seasons with great contrasts between polar nights with sparkling northern lights in a white winter landscape and warm summers filled with swimming and hundred days without night under the midnight sun. In the east – a 300-km coastal stretch facing the world's largest brackish water archipelago, the Bothnian Bay, with thousands of islands. Sandy beaches, fishing camps and unique produce. In the west – vast mountains, brooks with water so clean you can drink from them and lots of adventures around the corner. In between the quiet, enigmatic, open-handed forest and river valleys from Skellefte River in the south to Torne River in the north-east, all with their unique distinctive characteristics to offer. Traditions and cultures are strong here, and love of nature is even stronger. This is our everyday-life, and we invite you to share it with us. [www.swedishlapland.com](http://www.swedishlapland.com)



### Discover Piteå further at:

[www.visitpitea.se/eng](http://www.visitpitea.se/eng)  
[facebook.com/piteaturist](https://facebook.com/piteaturist)  
[@turistcenter](https://instagram.com/turistcenter)

