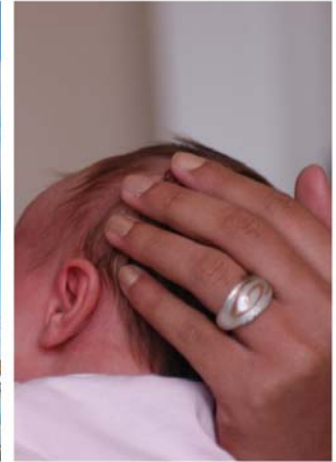




**Piteå Kommun**

# Piteå

**– we make things possible  
in a unique way.**







# Delightful seasons

- Summer with light nights, sea, sun and bathing.
- Winter with snow, skis, snowmobiles and silence.
- Exciting activities and year-round enjoyment!





# Brief facts...

- Piteå was founded in 1621
- area is as large as Gotland
- roughly 41,000 inhabitants





# Piteå as a town

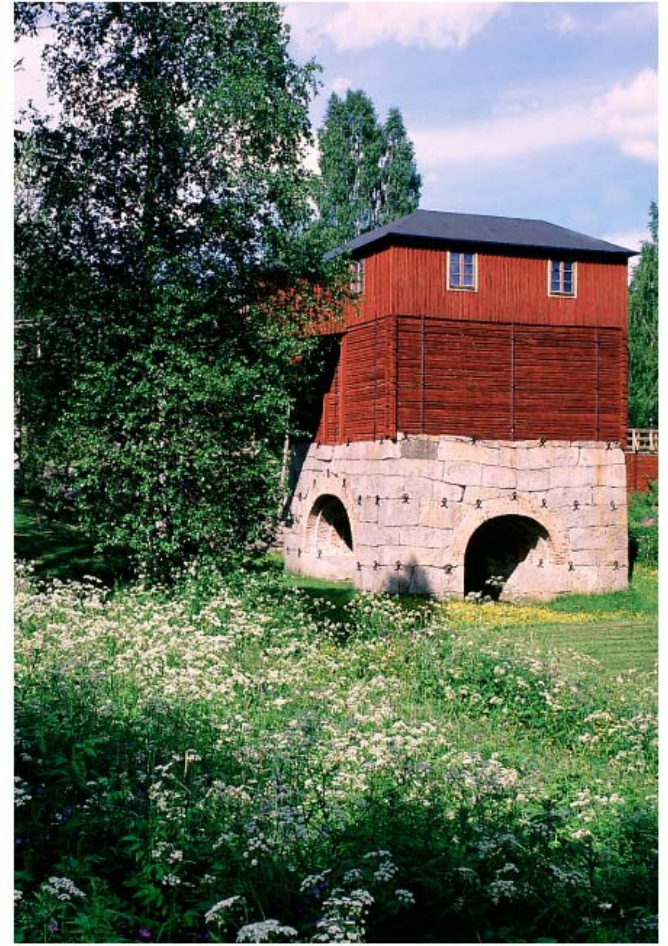
- 1621 town privileges
- 1627 first school
- 1634 Piteå requests that the town government banish Luleå as a commercial town
- 1666 the town burns  
- battle on locality





# 18th century

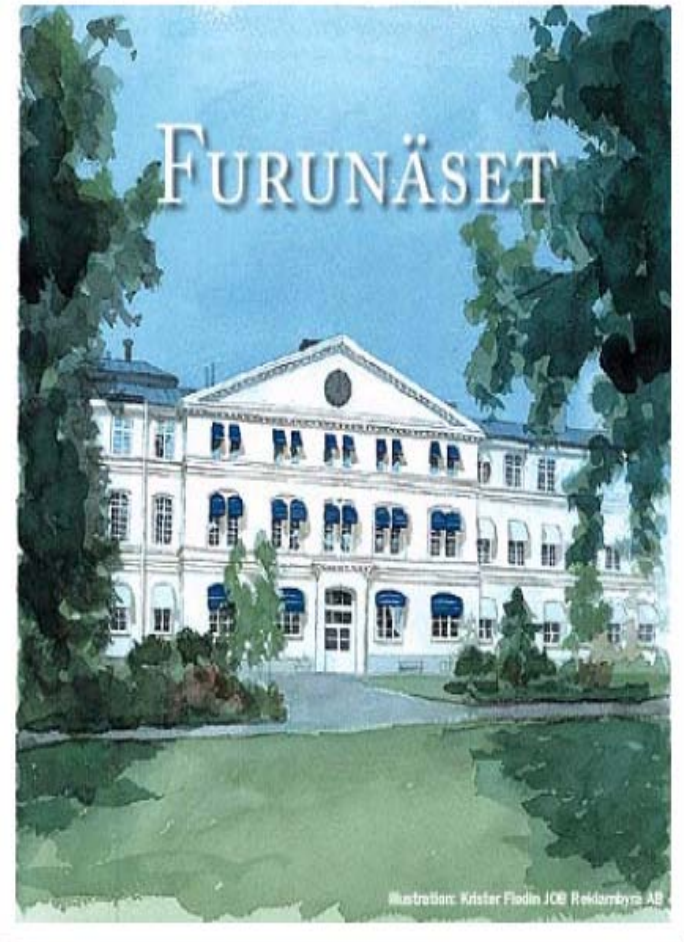
- Exports boards, tar, butter, fish and hides to Stockholm
- Well-managed farming
- 1750 start of porcelain production
- Even the poorest residents have access to coffee
- "The number of farmhands with pocket watches is alarmingly large"





# 19th century

- In 1810 Norrbotten County was formed
- 1818–1856 Piteå is the county council seat
- Hunger and years of famine
- Non Governmental Organizations start to form
- 1889 947,000 SEK granted to construct Piteå Hospital and Asylum





# 21th century

- Well-preserved town centre
- A small town with the opportunities of a large city
- A large number of cosy cafés and stylish restaurants
- Rich cultural life





# Vision

All of Piteå's inhabitants, people who have moved away and people who are Piteå residents in mind and spirit, feel that this is where you are when you're at home.





# Tio anledningar att gilla Piteå

1. Piteborna
2. Serviceandan
3. Shoppingen
4. Luften
5. Havet
6. Pitemålet
7. Palten
8. Doften
9. Musiken
10. Framåtandan

**Doris**

fd. Pitebo i förskingringen

S  
I  
P  
k  
r  
vi  
vä  
ce  
  
NU  
til  
v  
t



# Piteå residents are

- Pleasant
- Proud
- Open-minded
- *and have a strong will and belief in the future*





# Palt (traditional dish) and language

## **Paltn opa Peitmåle**

10 nevafole å kornmjöl.

En litn pila gröut å vatn.

Nager kåoke-päro å leka mang råreve.

Å så nålta sålt.

Hack na fläks uti inkråme.

Räid deigen lagomt tjäck.

Tröck ihop fläske så hä blei som en litn moil. Kle moiln vä nalta däig så hä blei som en större moil. Hev döm nede en groit vä kåocke-vatn å nålta sålt.

Lett döm stå å kåok en teim.

It vä andakt!





Piteå Kommun

# Piteå's archipelago

- Offers amazing experiences all year-round
- Boat tours in the summer
- Ice skating in the winter





# The countryside

- Quality of life with regards to nature and culture
- Power to grow and entrepreneurial spirit
- Community and freedom





# The seaside

"Norrland's Riviera"  
Surprise your senses  
– *experiences and  
memories that last a  
lifetime.*









# Lots going on...

- New businesses
- Solander Science park
- Around 1000 wind turbines
- New residential areas





# Our natural resources

- forest
- sea
- wind
- space
- *and the people*





# Industry facts

- Two of the largest paper mills in the world
- Two of the largest sawmills in Sweden





# The ten largest employers:

- The Municipality of Piteå
- Norrbotten County Council
- Smurfit Kappa Kraftliner
- SCA Packaging
- Aditro
- ABB
- Konsum Norrbotten
- Pite Havsbad
- Lindbäcks Bygg
- Swedbank telefonbank



# Mental hospital *became a business park*

- Swedbank telefonbank
- Youcall
- Nordea, etc.
- A total of around 700 employees in the entire area

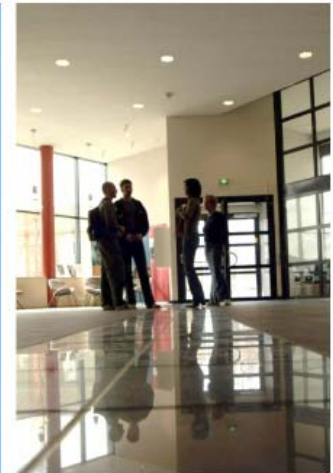




Piteå Kommun

# Acusticum and the Academy of Music

Education, research  
and business in music,  
media, new technology and  
events...





# Events

- PDOL (a street festival)
- Piteå Summer Games
- Stora Nolia (Sweden's largest annual trade fair)
- Festspelen i Pite älvdal (Festival in Pite River Valley)
- Piteå Dragway
- Palt day and many, many more...





# Infrastructure

- 70 kilometres of walking and cycling paths
- 45 minutes to the airport
- Deep-water port and airfreight terminal
- Railway
- Internet access both in the villages and in the city





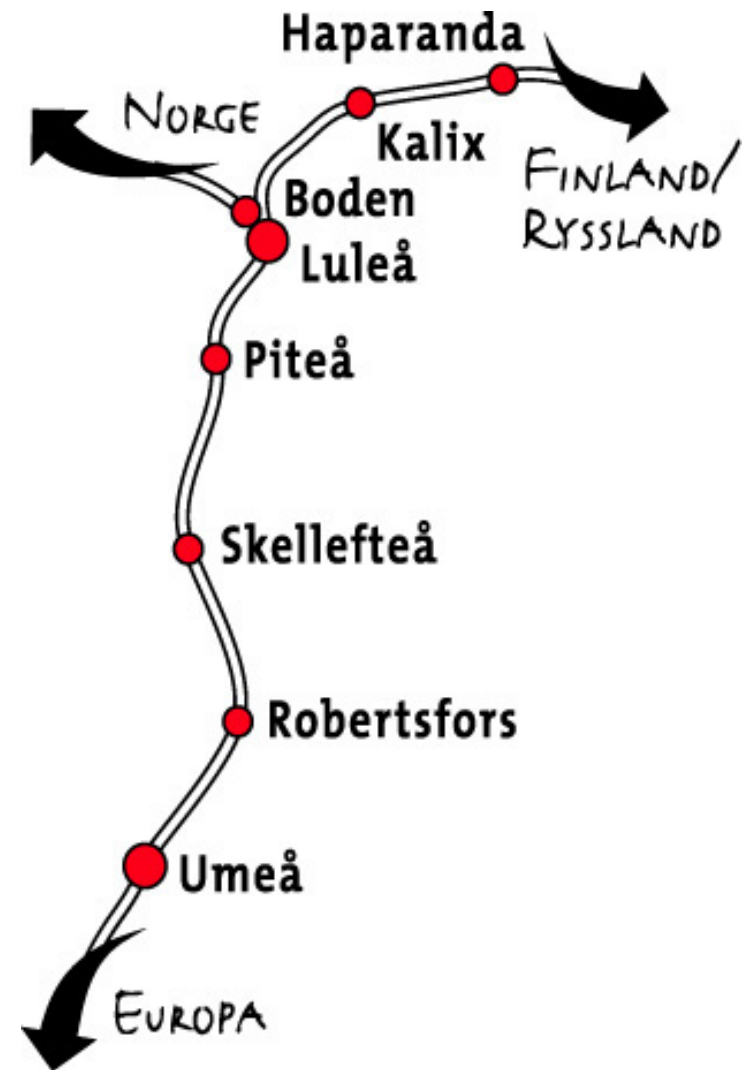
# Goals for infrastructure

- For passenger and goods transportation to be efficient and environmentally friendly.
- For there to be well-developed boat transportation and for a coastal railway to be built.
- For the pedestrian and cycling network to be well developed and frequently used.



# The North Bothnia Line

- Increased capacity
- Lower transportation costs
- Travelling time cut in half
- Larger market





Piteå Kommun

# Birth rate 2008

**Piteå**

1,95 child/woman

**National**

1,91 child/woman





## Average age

Piteå	-	Sweden
41,9		41,0

## Average life expectancy

	Piteå	Norrbotten	Sverige
Women	82,76	82,26	82,9
Men	78,11	77,62	78,7

The figures for 2008





## Average income 2007

	Men	Women	Total
Piteå	253	180	216
County	243	183	213
National	262	188	235

Figures in '000 sek

Source: SCB (Statistics Sweden) income statistics





# The good life

Piteå is a good place both for living and working.

Many meetingplaces, good security and care.





# Care and security

- Low violent crimes rate.
- Good healthcare, and good care for the disabled and elderly.
- Sense of security and belief in the future among young people.

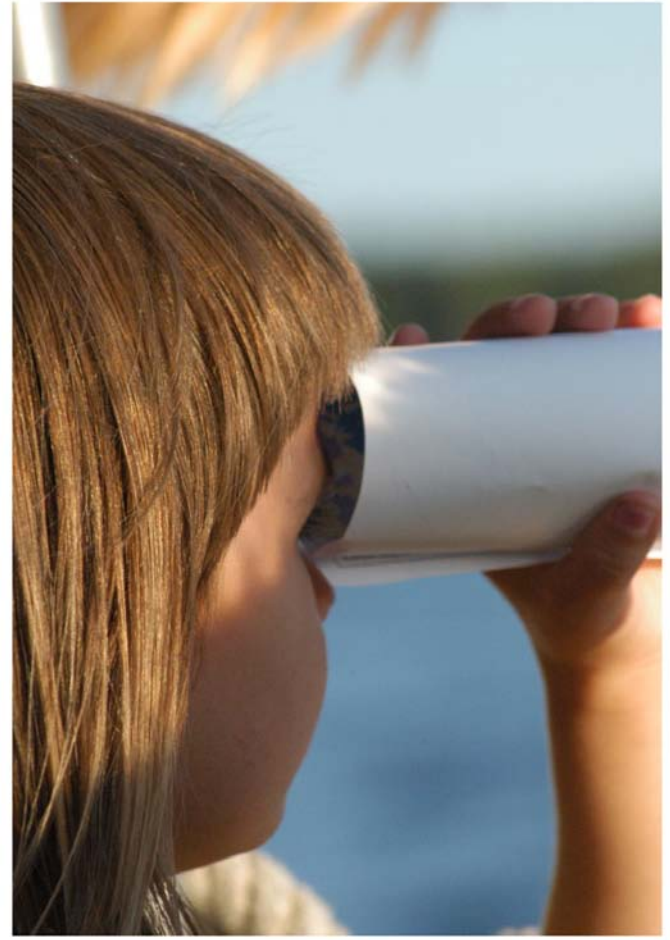




Piteå Kommun

# Children and young people are our future

All forms of education within the municipality are of such high standard that Piteå is perceived as an attractive place to live.





# Childcare and education

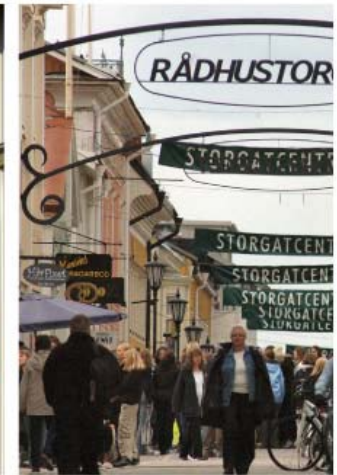
- Many and well-educated teachers
- Focus on dance/music
- School environment and meals prioritised
- Unique university





# Positive living environment

- Attractive housing
- Well-preserved town centre
- Close to nature
- Vibrant countryside





# Housing

- Blocks of flats **8,473**
- Single-family homes **11,417**
- Summer houses **2,693** (2006)

Source: SCB (Statistics Sweden) 2008

# House prices

e.g. 5-room house

Piteå	-	Stockholm
780,000		3,200,000 SEK



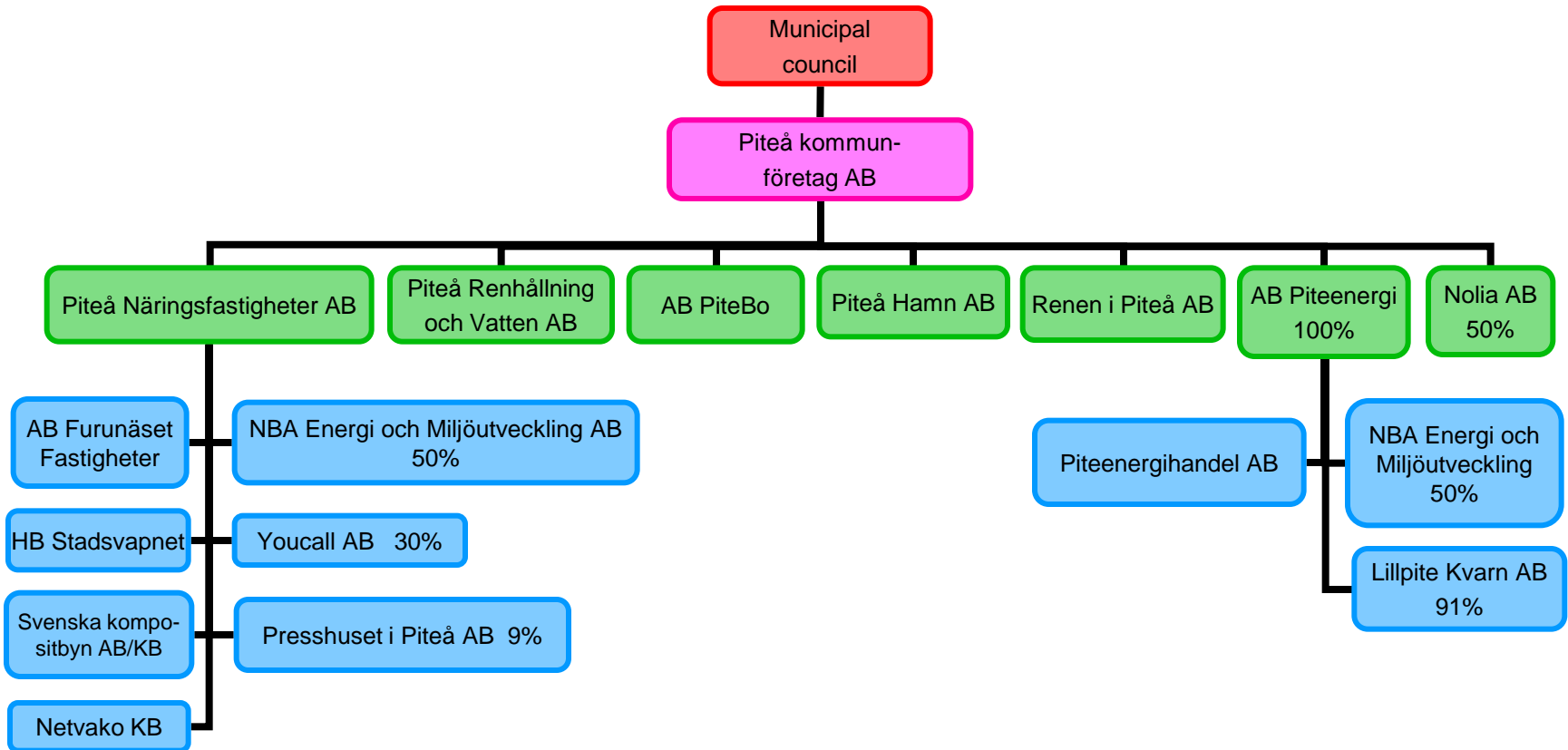


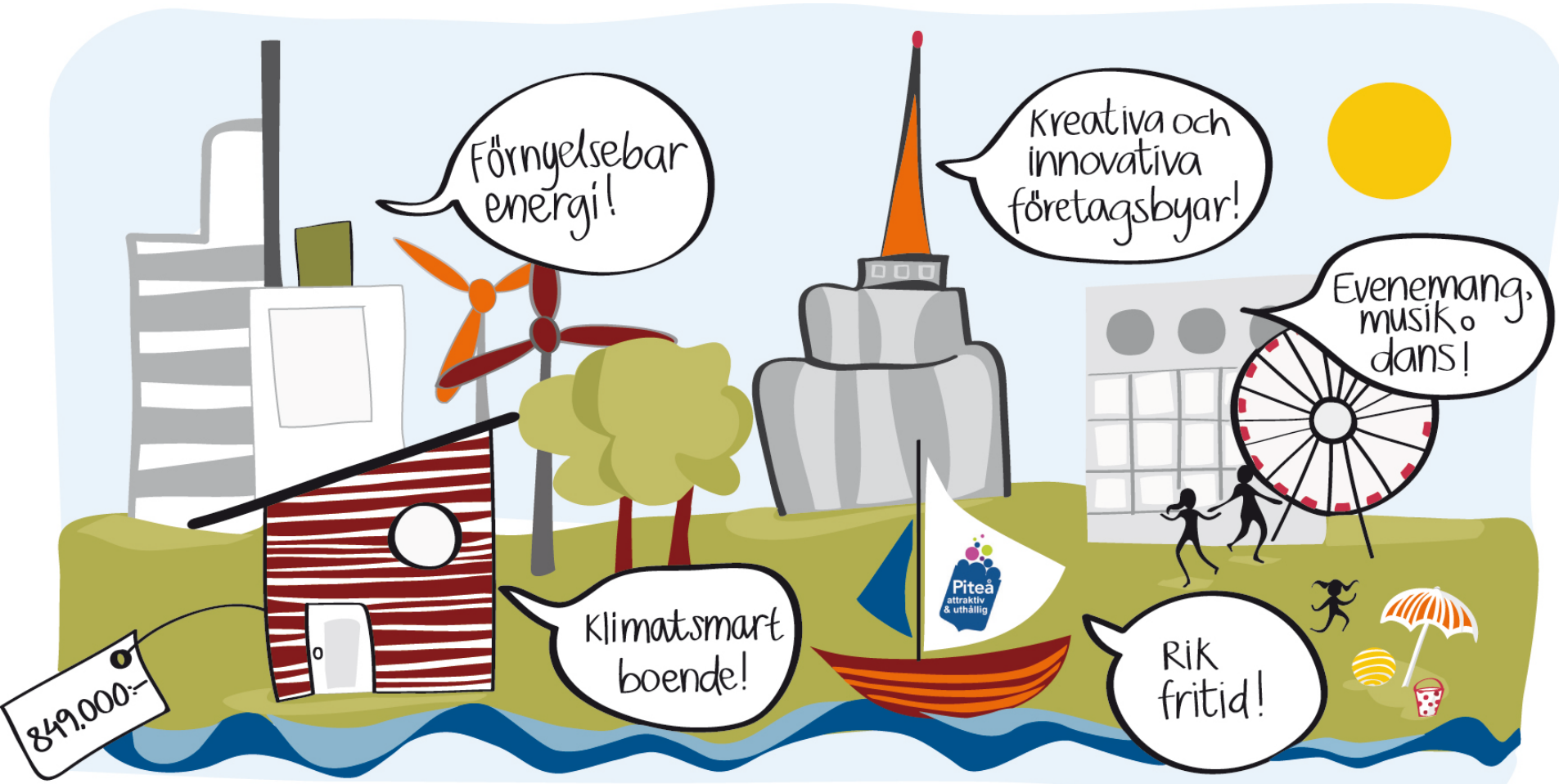
# Organisational plan for the Municipality of Piteå





# The Municipality of Piteå's companies











**” Piteå – makes you feel at home. ”**



Presentation of the Municipality of Piteå 2009