



VIEW OVER THE TRAIN PLATFORMS

THE HUB

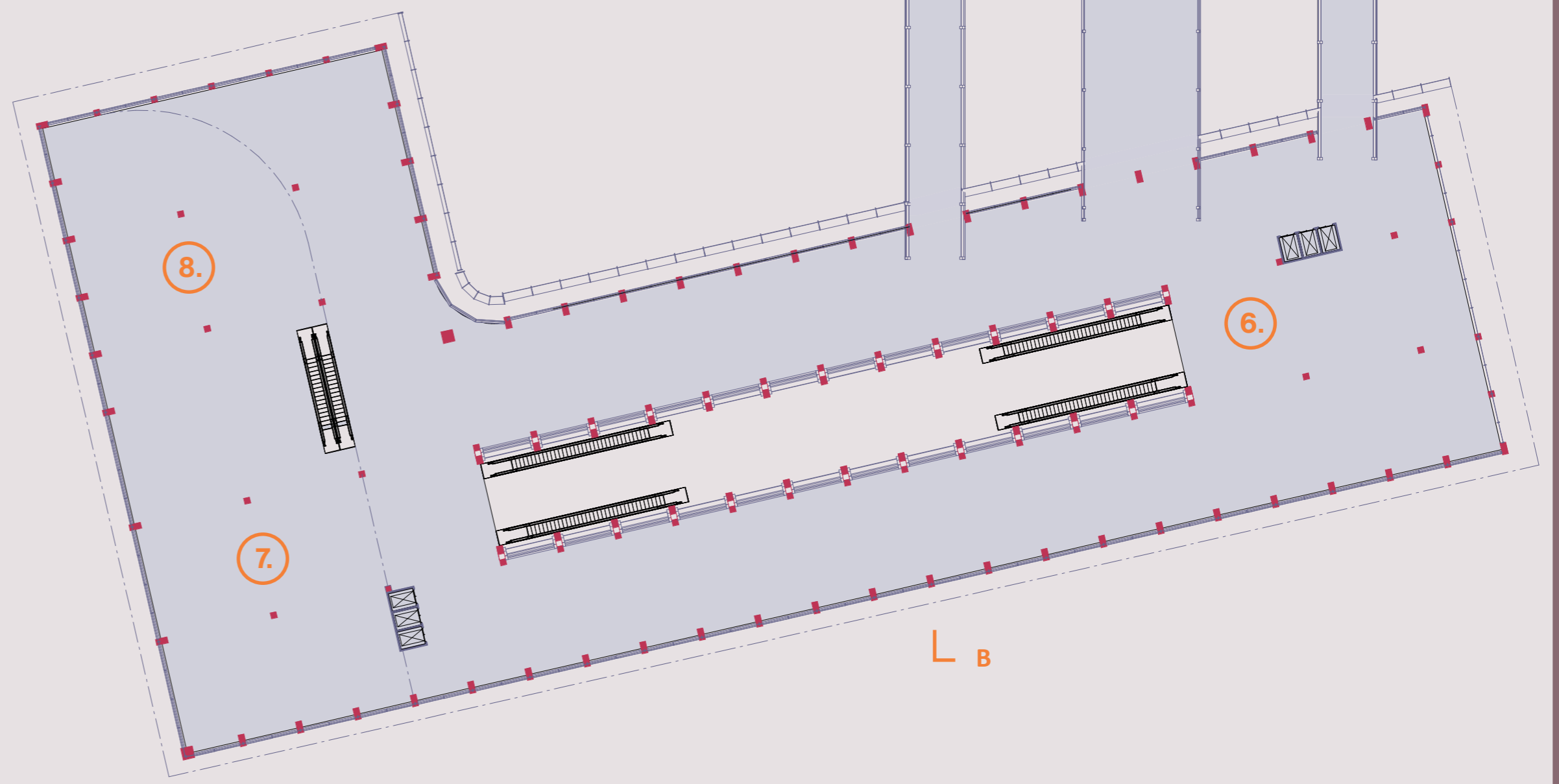
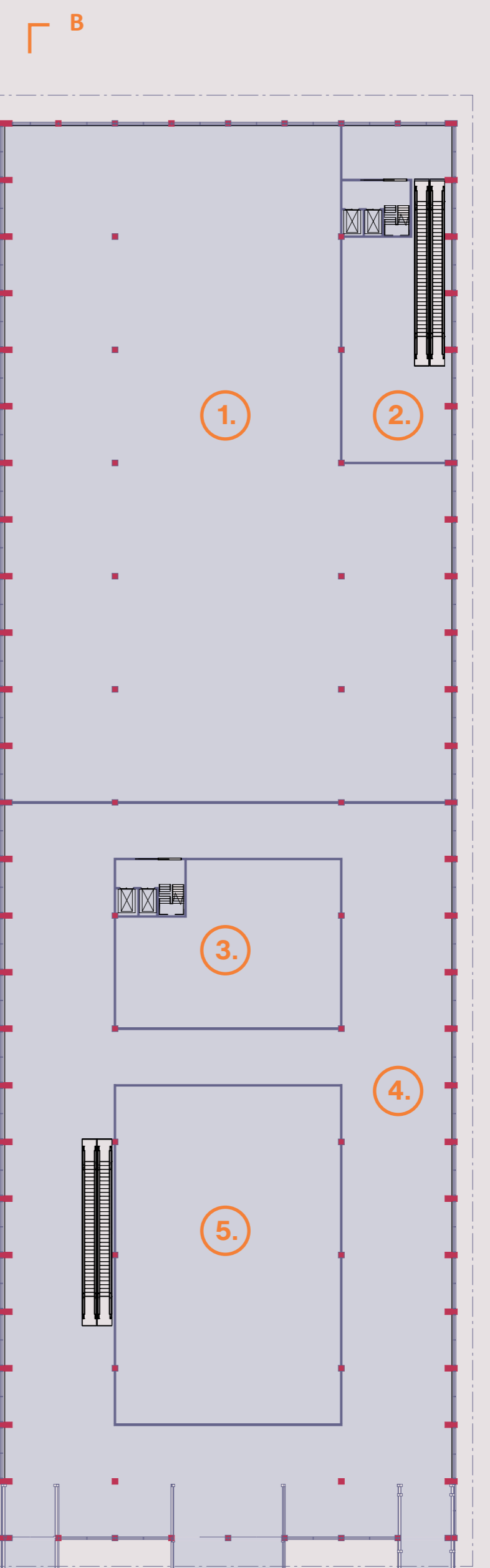
The station is a two-faced structure, one for the people and one for the industry. By having designated tracks for multiple purposes, the station will be used simultaneously by different actors and users.

Visually sharing the same space, The platforms and the tracks are embraced by a vaulted timber structure that allows the daylight down to the platforms.

The glazed electrochromic shell will adapt to the environment to create the best sustainable and economical conditions for the station. The curved shape of the building aims to deal with the large amount of snow during the winter.

LEGEND

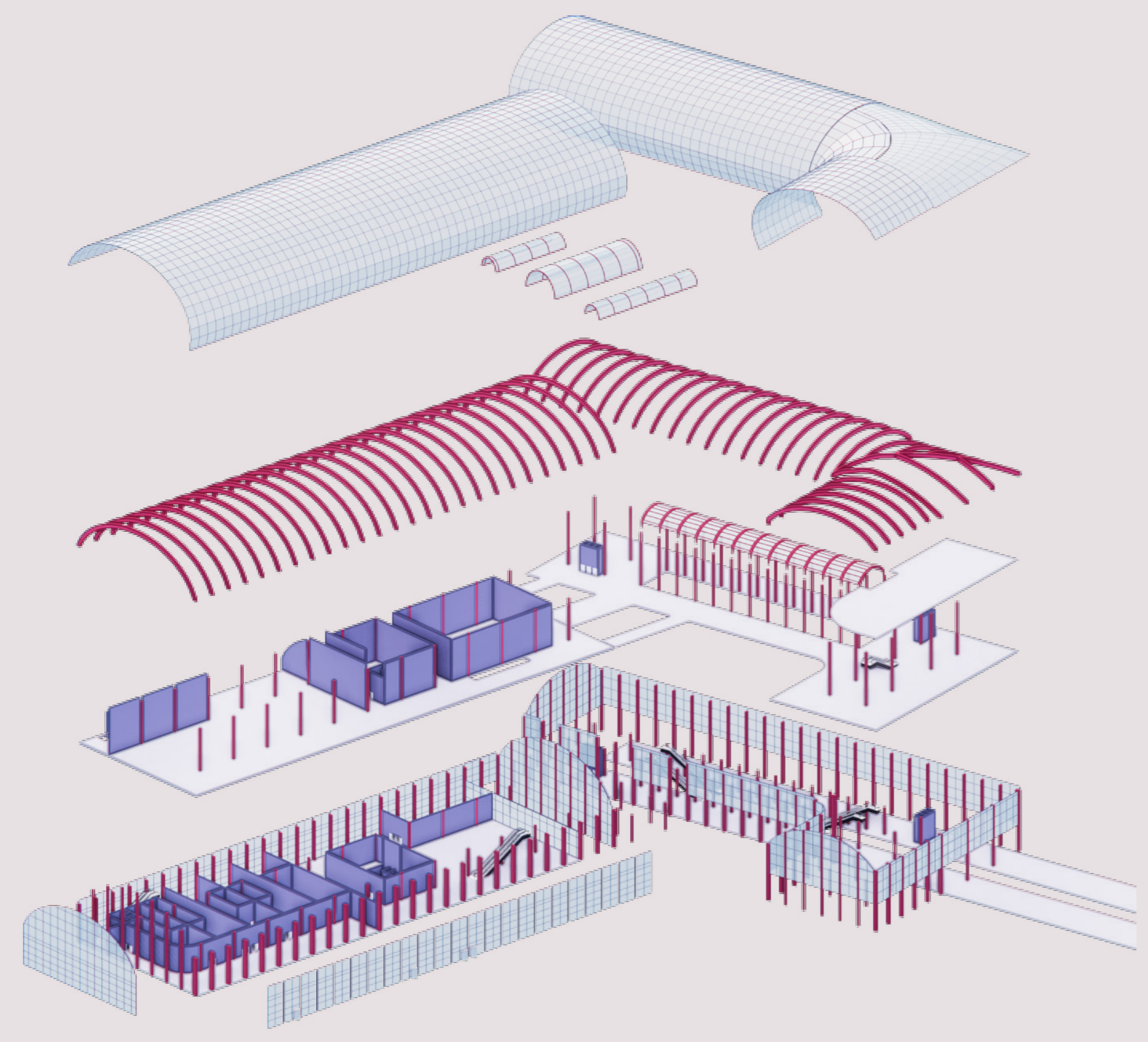
- ① CO-WORKING
- ② ENTRANCE CO-WORKING
- ③ WC / BAG-STORAGE
- ④ WAITING AREA
- ⑤ EXHIBITION AREA
- ⑥ PLATFORM COMMUNICATION
- ⑦ FAST-FOOD RESTAURANT
- ⑧ MEZZANINE RESTAURANT



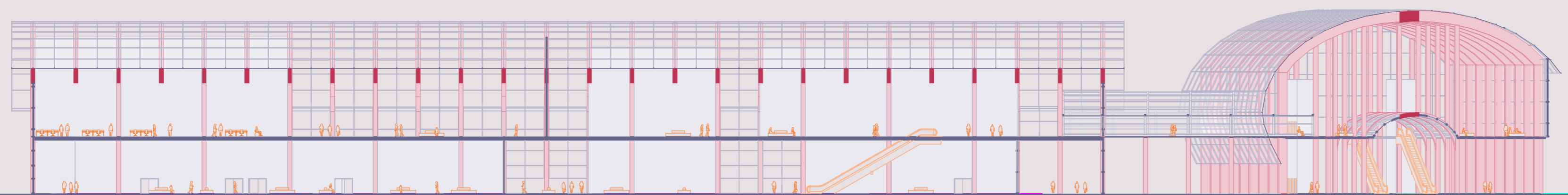
LEVEL 2
1:500



KISS AND GO AREA



EXPLODED AXONOMETRIC



SECTION B-B
1:500